



ELECTRONIC COPY

Report verification at igi.org

LABORATORY GROWN DIAMOND REPORT

November 19, 2025
 IGI Report Number
 Description **LABORATORY GROWN DIAMOND**
 Shape and Cutting Style **ROUND BRILLIANT**
 Measurements **9.52 - 9.60 X 5.92 MM**

GRADING RESULTS

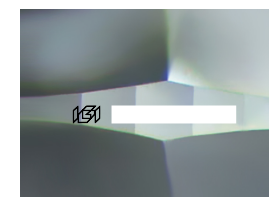
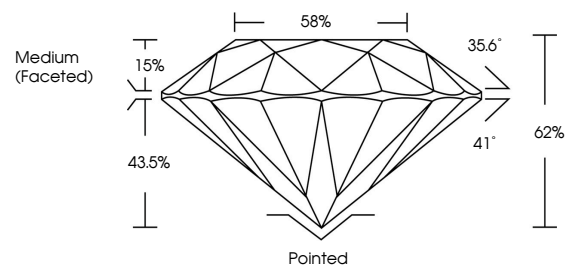
Carat Weight **3.33 CARATS**
 Color Grade **D**
 Clarity Grade **VVS 1**
 Cut Grade **IDEAL**

ADDITIONAL GRADING INFORMATION

Polish **EXCELLENT**
 Symmetry **EXCELLENT**
 Fluorescence **NONE**
 Inscription(s) 

Comments: HEARTS & ARROWS
 As Grown - No indication of post-growth treatment. This Laboratory Grown Diamond was created by High Pressure High Temperature (HPHT) growth process. Type II

PROPORTIONS



Sample Image Used

COLOR

D E F G H I J Faint Very Light Light

CLARITY

FL	IF	VVS ¹⁻²	VS ¹⁻²	SI ¹⁻²	I ¹⁻³
Flawless	Internally Flawless	Very Very Slightly Included	Very Slightly Included	Slightly Included	Included

November 19, 2025
 IGI Report Number
 Description **LABORATORY GROWN DIAMOND**
 Shape and Cutting Style **ROUND BRILLIANT**
 Measurements **9.52 - 9.60 X 5.92 MM**

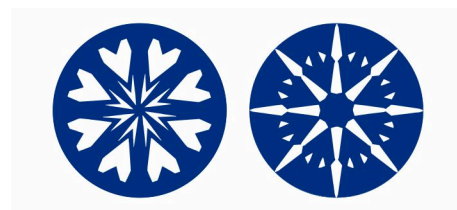
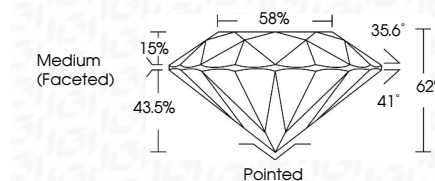
GRADING RESULTS

Carat Weight **3.33 CARATS**
 Color Grade **D**
 Clarity Grade **VVS 1**
 Cut Grade **IDEAL**

ADDITIONAL GRADING INFORMATION

Polish **EXCELLENT**
 Symmetry **EXCELLENT**
 Fluorescence **NONE**
 Inscription(s) 

Comments: HEARTS & ARROWS
 As Grown - No indication of post-growth treatment. This Laboratory Grown Diamond was created by High Pressure High Temperature (HPHT) growth process. Type II



November 19, 2025	3.33 CARATS	D	Pointed
IGI Report No	ROUND BRILLIANT	VVS 1	EXCELLENT
9.52 - 9.60 X 5.92 MM	Color Grade	IDEAL	EXCELLENT
Carat Weight	Clarity Grade	62%	NONE
Color Grade	Depth	58%	None
Clarity Grade	Table	Medium (Faceted)	None
Depth	Girdle		
Table	Culet		
Girdle	Polish		
Culet	Symmetry		
Polish	Fluorescence		
Symmetry	Inscriptions(s)		
Fluorescence			
Inscriptions(s)			

Comments: HEARTS & ARROWS
 As Grown - No indication of post-growth treatment. This Laboratory Grown Diamond was created by High Pressure High Temperature (HPHT) growth process. Type II