



ELECTRONIC COPY

Report verification at igi.org

LABORATORY GROWN DIAMOND REPORT

January 6, 2026
 IGI Report Number
 Description **LABORATORY GROWN DIAMOND**
 Shape and Cutting Style **OVAL MODIFIED BRILLIANT**
 Measurements **11.08 X 7.88 X 4.62 MM**

GRADING RESULTS

Carat Weight **3.01 CARATS**
 Color Grade **FANCY VIVID PINK**
 Clarity Grade **VS 1**

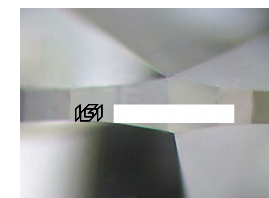
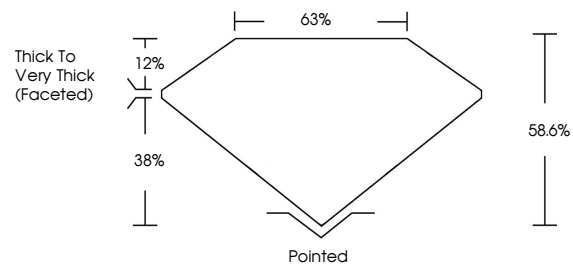
ADDITIONAL GRADING INFORMATION

Polish **EXCELLENT**
 Symmetry **EXCELLENT**
 Fluorescence **STRONG**

Inscription(s) 

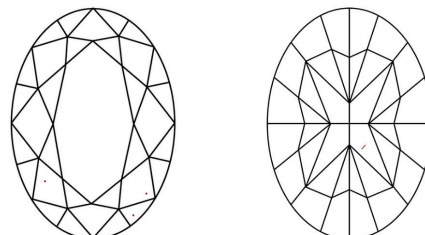
Comments: This Laboratory Grown Diamond was created by Chemical Vapor Deposition (CVD) growth process.
 Indications of post-growth treatment.

PROPORTIONS



Sample Image Used

CLARITY CHARACTERISTICS



KEY TO SYMBOLS

Red symbols indicate internal characteristics.
 Green symbols indicate external characteristics.

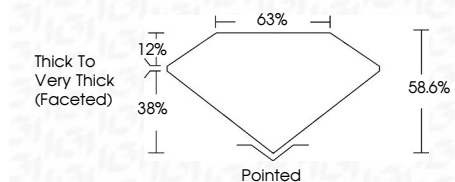
COLOR

D E F G H I J Faint Very Light Light

CLARITY

FL	IF	VS ¹⁻²	VS ¹⁻²	SI ¹⁻²	I ¹⁻³
Flawless	Internally Flawless	Very Very Slightly Included	Very Slightly Included	Slightly Included	Included

January 6, 2026
 IGI Report Number
 Description **LABORATORY GROWN DIAMOND**
 Shape and Cutting Style **OVAL MODIFIED BRILLIANT**
 Measurements **11.08 X 7.88 X 4.62 MM**
GRADING RESULTS
 Carat Weight **3.01 CARATS**
 Color Grade **FANCY VIVID PINK**
 Clarity Grade **VS 1**



ADDITIONAL GRADING INFORMATION

Polish **EXCELLENT**
 Symmetry **EXCELLENT**
 Fluorescence **STRONG**

Inscription(s) 
 Comments: This Laboratory Grown Diamond was created by Chemical Vapor Deposition (CVD) growth process.
 Indications of post-growth treatment.



January 6, 2026
 IGI Report No
OVAL MODIFIED BRILLIANT
 11.08 X 7.88 X 4.62 MM
 Carat Weight **3.01 CARATS**
 Color Grade **FANCY VIVID PINK**
 Clarity Grade **VS 1**
 Depth **58.6%**
 Table **63%**
 Girdle **Thick to Very Thick (Faceted)**
 Culet **Pointed**
 Polish **EXCELLENT**
 Symmetry **EXCELLENT**
 Fluorescence **STRONG**
 Inscription(s) 

Comments: This Laboratory Grown Diamond was created by Chemical Vapor Deposition (CVD) growth process.
 Indications of post-growth treatment.