



ELECTRONIC COPY

Report verification at igi.org



May 5, 2026
IGI Report Number
Description LABORATORY GROWN DIAMOND
Shape and Cutting Style HEXAGONAL MODIFIED STEP CUT
Measurements 12.06 X 6.69 X 4.60 MM
GRADING RESULTS
Carat Weight 2.91 CARATS
Color Grade E
Clarity Grade VS 1

May 5, 2026
IGI Report Number
Description LABORATORY GROWN DIAMOND
Shape and Cutting Style HEXAGONAL MODIFIED STEP CUT
Measurements 12.06 X 6.69 X 4.60 MM

GRADING RESULTS

Carat Weight 2.91 CARATS
Color Grade E
Clarity Grade VS 1

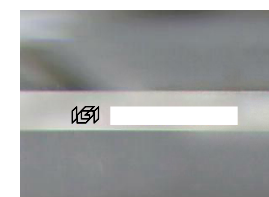
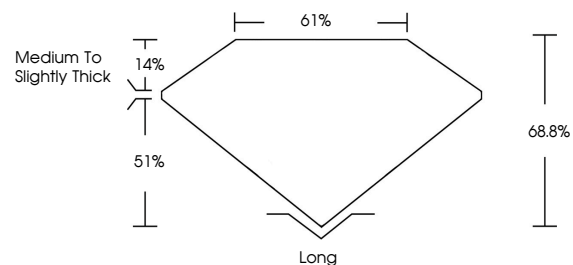
ADDITIONAL GRADING INFORMATION

Polish EXCELLENT
Symmetry EXCELLENT
Fluorescence NONE

Inscription(s) IGI

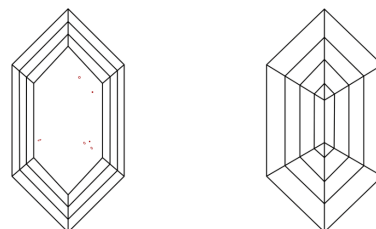
Comments: This Laboratory Grown Diamond was created by Chemical Vapor Deposition (CVD) growth process. Type IIa

PROPORTIONS



Sample Image Used

CLARITY CHARACTERISTICS



KEY TO SYMBOLS

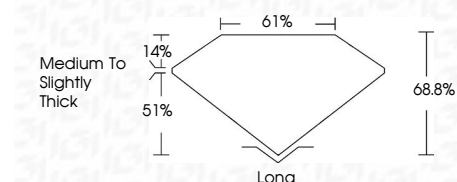
Red symbols indicate internal characteristics.
Green symbols indicate external characteristics.

COLOR

D E F G H I J Faint Very Light Light

CLARITY

FL IF VS 1-2 VS 2-3 SI 1-2 I 1-3
Flawless Internally Flawless Very Very Slightly Included Very Slightly Included Slightly Included Included



ADDITIONAL GRADING INFORMATION

Polish EXCELLENT
Symmetry EXCELLENT
Fluorescence NONE
Inscription(s) IGI
Comments: This Laboratory Grown Diamond was created by Chemical Vapor Deposition (CVD) growth process. Type IIa



May 5, 2026
IGI Report No
HEXAGONAL MODIFIED STEP CUT
12.06 X 6.69 X 4.60 MM
2.91 CARATS
E
2.91 CARATS
E
68.8%
61%
Medium to Slightly Thick
Long
EXCELLENT
EXCELLENT
NONE
IGI
Comments: This Laboratory Grown Diamond was created by Chemical Vapor Deposition (CVD) growth process. Type IIa