



ELECTRONIC COPY

LABORATORY GROWN DIAMOND REPORT

Report verification at igi.org

LABORATORY GROWN DIAMOND REPORT

LABORATORY GROWN DIAMOND REPORT

LABORATORY GROWN DIAMOND REPORT

April 9, 2024
IGI Report Number
Description LABORATORY GROWN DIAMOND
Shape and Cutting Style OVAL BRILLIANT
Measurements 11.51 X 8.25 X 4.92 MM

GRADING RESULTS

Carat Weight 2.89 CARATS
Color Grade H
Clarity Grade VVS 2

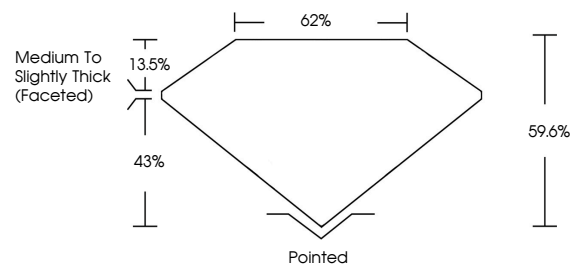
ADDITIONAL GRADING INFORMATION

Polish EXCELLENT
Symmetry EXCELLENT
Fluorescence NONE

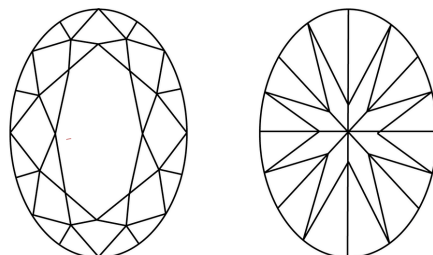
Inscription(s) IGI

Comments: This Laboratory Grown Diamond was created by Chemical Vapor Deposition (CVD) growth process and may include post-growth treatment. Type IIa

PROPORTIONS



CLARITY CHARACTERISTICS



KEY TO SYMBOLS

Red symbols indicate internal characteristics.
Green symbols indicate external characteristics.

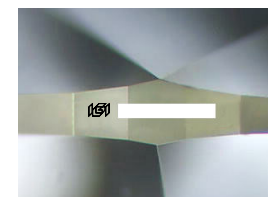
GRADING SCALES

CLARITY

Table mapping clarity grades (IF, VVS 1-2, VS 1-2, SI 1-2, I 1-3) to descriptions (Internally Flawless, Very Very Slightly Included, Very Slightly Included, Slightly Included, Included).

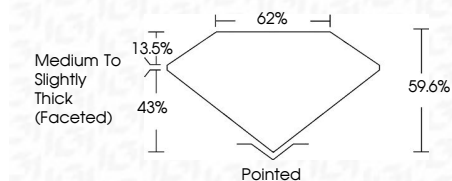
COLOR

Table mapping color grades (D, E, F, G, H, I, J, Faint, Very Light, Light) to descriptions.



Sample Image Used

April 9, 2024
IGI Report Number
Description LABORATORY GROWN DIAMOND
Shape and Cutting Style OVAL BRILLIANT
Measurements 11.51 X 8.25 X 4.92 MM
GRADING RESULTS
Carat Weight 2.89 CARATS
Color Grade H
Clarity Grade VVS 2



ADDITIONAL GRADING INFORMATION

Polish EXCELLENT
Symmetry EXCELLENT
Fluorescence NONE
Inscription(s) IGI

Comments: This Laboratory Grown Diamond was created by Chemical Vapor Deposition (CVD) growth process and may include post-growth treatment. Type IIa



IGI

Summary table of diamond specifications: April 9, 2024, IGI Report No. OVAL BRILLIANT, 11.51 X 8.25 X 4.92 MM, 2.89 CARATS, H, VVS 2, 60.6%, 62%, Medium to Slightly Thick (Faceted), Pointed, EXCELLENT, EXCELLENT, NONE, IGI.

Comments: This Laboratory Grown Diamond was created by Chemical Vapor Deposition (CVD) growth process and may include post-growth treatment. Type IIa

