



**LABORATORY GROWN DIAMOND REPORT**

May 5, 2026  
 IGI Report Number  
 Description **LABORATORY GROWN DIAMOND**  
 Shape and Cutting Style **OVAL BRILLIANT**  
 Measurements **6.58 X 4.51 X 2.60 MM**

**GRADING RESULTS**

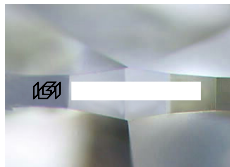
Carat Weight **0.52 CARAT**  
 Color Grade **E**  
 Clarity Grade **VS 2**

**ADDITIONAL GRADING INFORMATION**

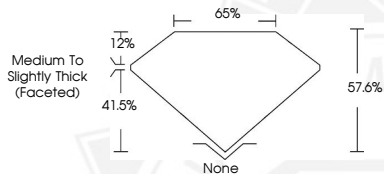
Polish **GOOD**  
 Symmetry **GOOD**  
 Fluorescence **NONE**

Inscription(s)

Comments: This Laboratory Grown Diamond was created by Chemical Vapor Deposition (CVD) growth process. Type IIa



Sample Image Used



May 5, 2026  
 IGI Report Number  
 OVAL BRILLIANT  
 LABORATORY GROWN DIAMOND  
 6.58 X 4.51 X 2.60 MM  
 Carat Weight **0.52 CARAT**  
 Color Grade **E**  
 Clarity Grade **VS 2**  
 Polish **GOOD**  
 Symmetry **GOOD**  
 Fluorescence **NONE**

Comments: This Laboratory Grown Diamond was created by Chemical Vapor Deposition (CVD) growth process. Type IIa

May 5, 2026  
 IGI Report Number  
 OVAL BRILLIANT  
 LABORATORY GROWN DIAMOND  
 6.58 X 4.51 X 2.60 MM  
 Carat Weight **0.52 CARAT**  
 Color Grade **E**  
 Clarity Grade **VS 2**  
 Polish **GOOD**  
 Symmetry **GOOD**  
 Fluorescence **NONE**

Comments: This Laboratory Grown Diamond was created by Chemical Vapor Deposition (CVD) growth process. Type IIa



THIS DOCUMENT WAS PRODUCED WITH THE FOLLOWING SECURITY MEASURES: SPECIAL DOCUMENT PAPER, INK SCREENS, WATERMARK, BACKGROUND DESIGNS, HOLOGRAM AND OTHER SECURITY FEATURES NOT LISTED AND DO EXCEED DOCUMENT SECURITY INDUSTRY GUIDELINES.