



ELECTRONIC COPY

Report verification at igi.org

LABORATORY GROWN DIAMOND REPORT

October 21, 2024
 IGI Report Number
 Description **LABORATORY GROWN DIAMOND**
 Shape and Cutting Style **CUSHION MIXED CUT**
 Measurements **7.71 X 5.25 X 2.77 MM**

GRADING RESULTS

Carat Weight **1.07 CARAT**
 Color Grade **G**
 Clarity Grade **VVS 2**

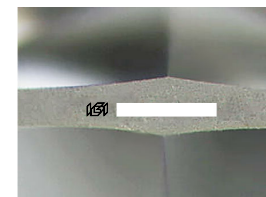
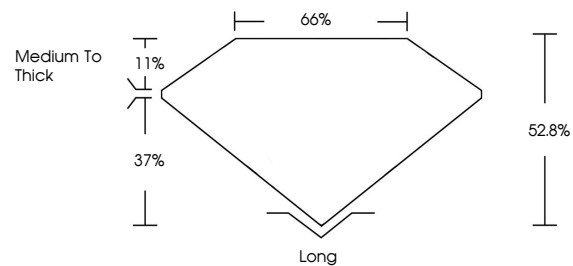
ADDITIONAL GRADING INFORMATION

Polish **EXCELLENT**
 Symmetry **EXCELLENT**
 Fluorescence **NONE**

Inscription(s)

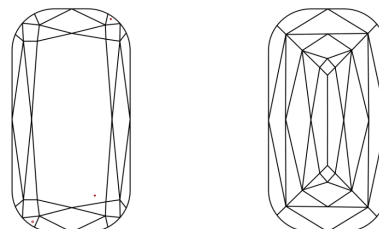
Comments: This Laboratory Grown Diamond was created by Chemical Vapor Deposition (CVD) growth process. Type IIa

PROPORTIONS



Sample Image Used

CLARITY CHARACTERISTICS



KEY TO SYMBOLS

Red symbols indicate internal characteristics.
 Green symbols indicate external characteristics.

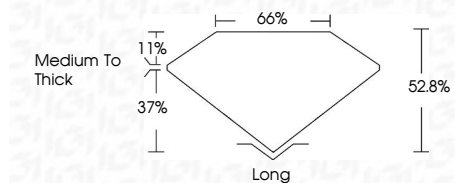
COLOR

D E F G H I J Faint Very Light Light

CLARITY

IF	VS ¹⁻²	VS ¹⁻²	SI ¹⁻²	I ¹⁻³
Internally Flawless	Very Very Slightly Included	Very Slightly Included	Slightly Included	Included

October 21, 2024
 IGI Report Number
 Description **LABORATORY GROWN DIAMOND**
 Shape and Cutting Style **CUSHION MIXED CUT**
 Measurements **7.71 X 5.25 X 2.77 MM**
GRADING RESULTS
 Carat Weight **1.07 CARAT**
 Color Grade **G**
 Clarity Grade **VVS 2**



ADDITIONAL GRADING INFORMATION

Polish **EXCELLENT**
 Symmetry **EXCELLENT**
 Fluorescence **NONE**

Inscription(s)
 Comments: This Laboratory Grown Diamond was created by Chemical Vapor Deposition (CVD) growth process. Type IIa



October 21, 2024	1.07 CARAT	G	VVS 2	62.0%	65%	Medium to Thick	Long
IGI Report No	1.07 CARAT	G	VVS 2	62.0%	65%	Medium to Thick	Long
CUSHION MIXED CUT	1.07 CARAT	G	VVS 2	62.0%	65%	Medium to Thick	Long
7.71 X 5.25 X 2.77 MM	1.07 CARAT	G	VVS 2	62.0%	65%	Medium to Thick	Long
Carat Weight	1.07 CARAT	G	VVS 2	62.0%	65%	Medium to Thick	Long
Color Grade	1.07 CARAT	G	VVS 2	62.0%	65%	Medium to Thick	Long
Clarity Grade	1.07 CARAT	G	VVS 2	62.0%	65%	Medium to Thick	Long
Depth	1.07 CARAT	G	VVS 2	62.0%	65%	Medium to Thick	Long
Table	1.07 CARAT	G	VVS 2	62.0%	65%	Medium to Thick	Long
Girdle	1.07 CARAT	G	VVS 2	62.0%	65%	Medium to Thick	Long
Culet	1.07 CARAT	G	VVS 2	62.0%	65%	Medium to Thick	Long
Polish	1.07 CARAT	G	VVS 2	62.0%	65%	Medium to Thick	Long
Symmetry	1.07 CARAT	G	VVS 2	62.0%	65%	Medium to Thick	Long
Fluorescence	1.07 CARAT	G	VVS 2	62.0%	65%	Medium to Thick	Long
Inscription(s)	1.07 CARAT	G	VVS 2	62.0%	65%	Medium to Thick	Long

Comments: This Laboratory Grown Diamond was created by Chemical Vapor Deposition (CVD) growth process. Type IIa