



ELECTRONIC COPY

Report verification at igi.org

DIAMOND REPORT

December 4, 2025
 IGI Report Number
 Description **NATURAL DIAMOND**
 Shape and Cutting Style **ROUND BRILLIANT**
 Measurements **6.33 - 6.38 X 3.95 MM**

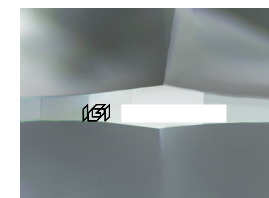
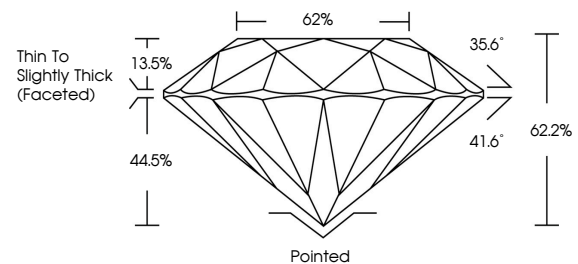
GRADING RESULTS

Carat Weight **1.00 CARAT**
 Color Grade **J**
 Clarity Grade **VVS 2**
 Cut Grade **EXCELLENT**

ADDITIONAL GRADING INFORMATION

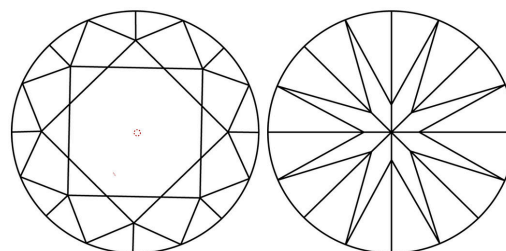
Polish **EXCELLENT**
 Symmetry **VERY GOOD**
 Fluorescence **NONE**
 Inscription(s)

PROPORTIONS



Sample Image Used

CLARITY CHARACTERISTICS



KEY TO SYMBOLS

Red symbols indicate internal characteristics.
 Green symbols indicate external characteristics.

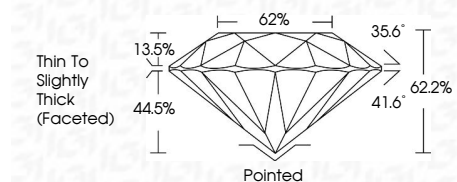
COLOR

D - F	G - J	K - M	N - R	S - Z	FANCY
Colorless	Near Colorless	Slightly Tinted	Very Light Color	Light Color	

CLARITY

FL	IF	VVS 1-2	VS 1-2	SI 1-2	I 1-3
Flawless	Internally Flawless	Very Very Slightly Included	Very Slightly Included	Slightly Included	Included

December 4, 2025
 IGI Report Number
 Description **NATURAL DIAMOND**
 Shape and Cutting Style **ROUND BRILLIANT**
 Measurements **6.33 - 6.38 X 3.95 MM**
GRADING RESULTS
 Carat Weight **1.00 CARAT**
 Color Grade **J**
 Clarity Grade **VVS 2**
 Cut Grade **EXCELLENT**



ADDITIONAL GRADING INFORMATION

Polish **EXCELLENT**
 Symmetry **VERY GOOD**
 Fluorescence **NONE**
 Inscription(s)



IGI

December 4, 2025
 IGI Report No
ROUND BRILLIANT
6.33 - 6.38 X 3.95 MM
 Carat Weight **1.00 CARAT**
 Color Grade **J**
 Clarity Grade **VVS 2**
 Cut Grade **EXCELLENT**
 Depth **62.2%**
 Table **62%**
 Girdle **Thin To Slightly Thick (Faceted)**
 Culet **Pointed**
 Polish **EXCELLENT**
 Symmetry **VERY GOOD**
 Fluorescence **NONE**
 Inscription(s)