



ELECTRONIC COPY

Report verification at igi.org



May 14, 2024

IGI Report Number

Description LABORATORY GROWN DIAMOND

Shape and Cutting Style PEAR BRILLIANT

Measurements 11.48 X 6.91 X 4.43 MM

GRADING RESULTS

Carat Weight 2.00 CARATS

Color Grade G

Clarity Grade VS 2

May 14, 2024

IGI Report Number

Description LABORATORY GROWN DIAMOND

Shape and Cutting Style PEAR BRILLIANT

Measurements 11.48 X 6.91 X 4.43 MM

GRADING RESULTS

Carat Weight 2.00 CARATS

Color Grade G

Clarity Grade VS 2

ADDITIONAL GRADING INFORMATION

Polish EXCELLENT

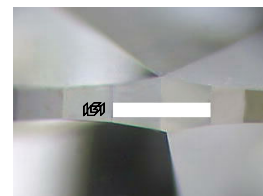
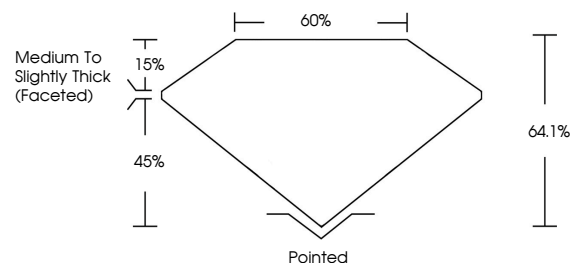
Symmetry EXCELLENT

Fluorescence NONE

Inscription(s) IGI

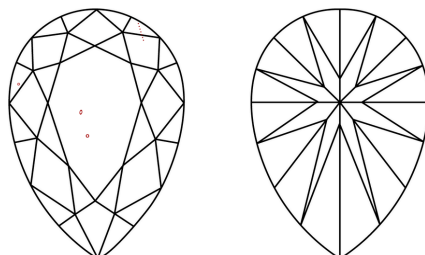
Comments: This Laboratory Grown Diamond was created by Chemical Vapor Deposition (CVD) growth process and may include post-growth treatment. Type IIa

PROPORTIONS



Sample Image Used

CLARITY CHARACTERISTICS



KEY TO SYMBOLS

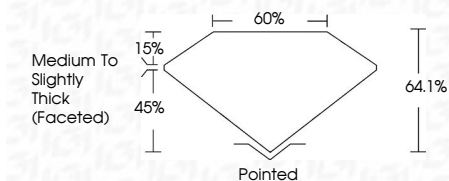
Red symbols indicate internal characteristics. Green symbols indicate external characteristics.

COLOR

D E F G H I J Faint Very Light Light

CLARITY

IF VS 1-2 VS 1-2 SI 1-2 I 1-3 Internally Flawless Very Very Slightly Included Very Slightly Included Slightly Included Included



ADDITIONAL GRADING INFORMATION

Polish EXCELLENT

Symmetry EXCELLENT

Fluorescence NONE

Inscription(s) IGI

Comments: This Laboratory Grown Diamond was created by Chemical Vapor Deposition (CVD) growth process and may include post-growth treatment. Type IIa



IGI



Table with 10 columns: May 14, 2024, IGI Report No. PEAR BRILLIANT, 11.48 X 6.91 X 4.43 MM, 2.00 CARATS, G, VS 2, 64.1%, 45%, Medium to Slightly Thick (Faceted), Pointed, EXCELLENT, EXCELLENT, NONE, IGI. Includes a comments section at the bottom.