



**ELECTRONIC COPY**

Report verification at [igi.org](http://igi.org)

**DIAMOND REPORT**

November 3, 2025  
 IGI Report Number  
 Description **NATURAL DIAMOND**  
 Shape and Cutting Style **OVAL BRILLIANT**  
 Measurements **7.99 X 6.01 X 3.31 MM**

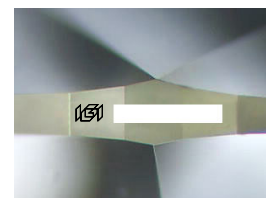
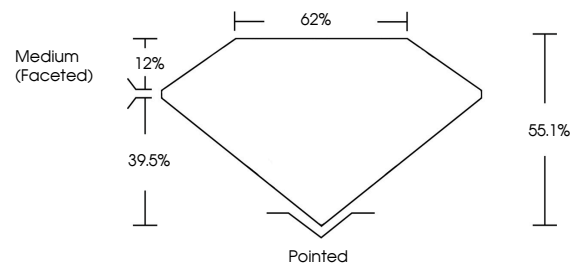
**GRADING RESULTS**

Carat Weight **1.00 CARAT**  
 Color Grade **F**  
 Clarity Grade **VVS 2**  
 Cut Grade **VERY GOOD**

**ADDITIONAL GRADING INFORMATION**

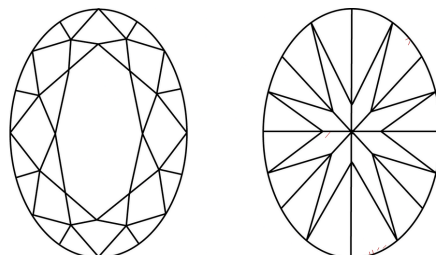
Polish **EXCELLENT**  
 Symmetry **EXCELLENT**  
 Fluorescence **SLIGHT**  
 Inscription(s)

**PROPORTIONS**



Sample Image Used

**CLARITY CHARACTERISTICS**



**KEY TO SYMBOLS**

Red symbols indicate internal characteristics.  
 Green symbols indicate external characteristics.

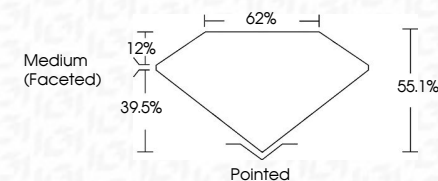
**COLOR**

D - F	G - J	K - M	N - R	S - Z	FANCY
Colorless	Near Colorless	Slightly Tinted	Very Light Color	Light Color	

**CLARITY**

IF	VVS <sup>1-2</sup>	VS <sup>1-2</sup>	SI <sup>1-2</sup>	I <sup>1-3</sup>
Internally Flawless	Very Very Slightly Included	Very Slightly Included	Slightly Included	Included

November 3, 2025  
 IGI Report Number  
 Description **NATURAL DIAMOND**  
 Shape and Cutting Style **OVAL BRILLIANT**  
 Measurements **7.99 X 6.01 X 3.31 MM**  
**GRADING RESULTS**  
 Carat Weight **1.00 CARAT**  
 Color Grade **F**  
 Clarity Grade **VVS 2**  
 Cut Grade **VERY GOOD**



**ADDITIONAL GRADING INFORMATION**

Polish **EXCELLENT**  
 Symmetry **EXCELLENT**  
 Fluorescence **SLIGHT**  
 Inscription(s)



**IGI**

November 3, 2025	1.00 CARAT	F	VVS 2	62%	Pointed
IGI Report No	7.99 X 6.01 X 3.31 MM	VERY GOOD	55.1%	Medium (Faceted)	EXCELLENT
OVAL BRILLIANT	1.00 CARAT	F	VVS 2	62%	EXCELLENT
Carat Weight	7.99 X 6.01 X 3.31 MM	VERY GOOD	55.1%	Medium (Faceted)	EXCELLENT
Color Grade	1.00 CARAT	F	VVS 2	62%	SLIGHT
Clarity Grade	7.99 X 6.01 X 3.31 MM	VERY GOOD	55.1%	Medium (Faceted)	EXCELLENT
Depth	1.00 CARAT	F	VVS 2	62%	SLIGHT
Table	7.99 X 6.01 X 3.31 MM	VERY GOOD	55.1%	Medium (Faceted)	EXCELLENT
Grade	1.00 CARAT	F	VVS 2	62%	SLIGHT
Culet	7.99 X 6.01 X 3.31 MM	VERY GOOD	55.1%	Medium (Faceted)	EXCELLENT
Polish	1.00 CARAT	F	VVS 2	62%	SLIGHT
Symmetry	7.99 X 6.01 X 3.31 MM	VERY GOOD	55.1%	Medium (Faceted)	EXCELLENT
Fluorescence	1.00 CARAT	F	VVS 2	62%	SLIGHT
Inscriptions(s)	7.99 X 6.01 X 3.31 MM	VERY GOOD	55.1%	Medium (Faceted)	EXCELLENT