



LABORATORY GROWN DIAMOND REPORT

June 11, 2026

IGI Report Number

Description

LABORATORY GROWN DIAMOND

Shape and Cutting Style

OVAL BRILLIANT

Measurements

7.79 X 5.55 X 3.19 MM

GRADING RESULTS

Carat Weight

0.87 CARAT

Color Grade

E

Clarity Grade

VVS 2

ADDITIONAL GRADING INFORMATION

Polish

VERY GOOD

Symmetry

VERY GOOD

Fluorescence

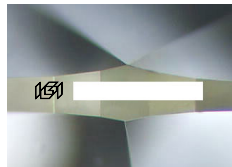
NONE

Inscription(s)

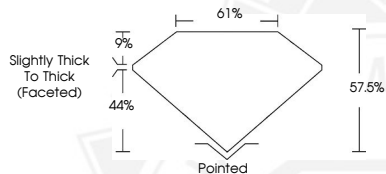


Comments: This Laboratory Grown Diamond was created by Chemical Vapor Deposition (CVD) growth process.

Type IIa



Sample Image Used



June 11, 2026

IGI Report Number

OVAL BRILLIANT

LABORATORY GROWN DIAMOND

7.79 X 5.55 X 3.19 MM

Carat Weight

0.87 CARAT

Color Grade

E

Clarity Grade

VVS 2

Polish

VERY GOOD

Symmetry

VERY GOOD

Fluorescence

NONE

Inscription(s)



Comments: This Laboratory Grown Diamond was created by Chemical Vapor Deposition (CVD) growth process. Type IIa

June 11, 2026

IGI Report Number

OVAL BRILLIANT

LABORATORY GROWN DIAMOND

7.79 X 5.55 X 3.19 MM

Carat Weight

0.87 CARAT

Color Grade

E

Clarity Grade

VVS 2

Polish

VERY GOOD

Symmetry

VERY GOOD

Fluorescence

NONE

Inscription(s)



Comments: This Laboratory Grown Diamond was created by Chemical Vapor Deposition (CVD) growth process. Type IIa



THIS DOCUMENT WAS PRODUCED WITH THE FOLLOWING SECURITY MEASURES: SPECIAL DOCUMENT PAPER, INK SCREENS, WATERMARK, BACKGROUND DESIGNS, HOLOGRAM AND OTHER SECURITY FEATURES NOT LISTED AND DO EXCEED DOCUMENT SECURITY INDUSTRY GUIDELINES.