



ELECTRONIC COPY

Report verification at igi.org

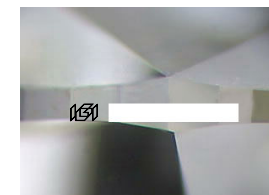
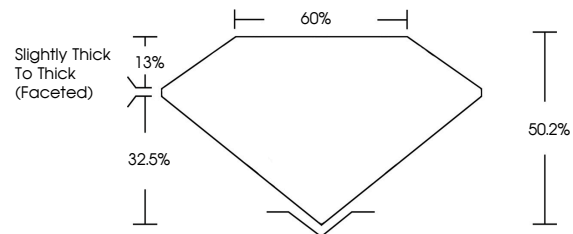
LABORATORY GROWN DIAMOND REPORT

October 10, 2025
 IGI Report Number
 Description **LABORATORY GROWN DIAMOND**
 Shape and Cutting Style **OVAL ROSE CUT**
 Measurements **8.72 X 6.06 X 3.04 MM**
GRADING RESULTS
 Carat Weight **1.27 CARAT**
 Color Grade **D**
 Clarity Grade **VVS 2**

ADDITIONAL GRADING INFORMATION

Polish **EXCELLENT**
 Symmetry **VERY GOOD**
 Fluorescence **NONE**
 Inscription(s) 
 Comments: This Laboratory Grown Diamond was created by Chemical Vapor Deposition (CVD) growth process.
 Type IIa

PROPORTIONS



Sample Image Used

COLOR

D E F G H I J Faint Very Light Light

CLARITY

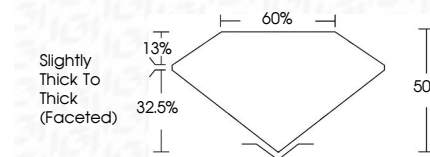
FL	IF	VVS ¹⁻²	VS ¹⁻²	SI ¹⁻²	I ¹⁻³
Flawless	Internally Flawless	Very Very Slightly Included	Very Slightly Included	Slightly Included	Included



October 10, 2025
 IGI Report Number
 Description **LABORATORY GROWN DIAMOND**
 Shape and Cutting Style **OVAL ROSE CUT**
 Measurements **8.72 X 6.06 X 3.04 MM**
GRADING RESULTS
 Carat Weight **1.27 CARAT**
 Color Grade **D**
 Clarity Grade **VVS 2**

ADDITIONAL GRADING INFORMATION

Polish **EXCELLENT**
 Symmetry **VERY GOOD**
 Fluorescence **NONE**
 Inscription(s) 
 Comments: This Laboratory Grown Diamond was created by Chemical Vapor Deposition (CVD) growth process.
 Type IIa



IGI



October 10, 2025
 IGI Report No
OVAL ROSE CUT
 8.72 X 6.06 X 3.04 MM
 Carat Weight **1.27 CARAT**
 Color Grade **D**
 Clarity Grade **VVS 2**
 Depth **60.2%**
 Table **13%**
 Girdle **Slightly Thick To Thick (Faceted)**
 Culet
 Polish **EXCELLENT**
 Symmetry **VERY GOOD**
 Fluorescence **NONE**
 Inscription(s) 
 Comments: This Laboratory Grown Diamond was created by Chemical Vapor Deposition (CVD) growth process.
 Type IIa