



**LABORATORY GROWN DIAMOND REPORT**

January 26, 2026

IGI Report Number

Description

**LABORATORY GROWN DIAMOND**

Shape and Cutting Style

**HEART BRILLIANT**

Measurements

**5.90 X 6.55 X 3.50 MM**

**GRADING RESULTS**

Carat Weight

**0.79 CARAT**

Color Grade

**FANCY LIGHT BROWN**

Clarity Grade

**VS 1**

**ADDITIONAL GRADING INFORMATION**

Polish

**VERY GOOD**

Symmetry

**GOOD**

Fluorescence

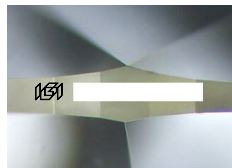
**NONE**

Inscription(s)

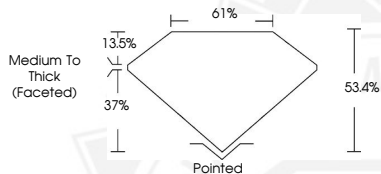


Comments: This Laboratory Grown Diamond was created by Chemical Vapor Deposition (CVD) growth process.

Indications of post-growth treatment.



Sample Image Used



January 26, 2026

IGI Report Number

HEART BRILLIANT

LABORATORY GROWN DIAMOND

5.90 X 6.55 X 3.50 MM

Carat Weight

**0.79 CARAT**

Color Grade

**FANCY LIGHT**

Clarity Grade

**BROWN**

Polish

**VS 1**

Symmetry

**VERY GOOD**

Fluorescence

**GOOD**

Inscription(s)

**NONE**

Comments: This Laboratory Grown Diamond was created by Chemical Vapor Deposition (CVD) growth process. Indications of post-growth treatment.

January 26, 2026

IGI Report Number

HEART BRILLIANT

LABORATORY GROWN DIAMOND

5.90 X 6.55 X 3.50 MM

Carat Weight

**0.79 CARAT**

Color Grade

**FANCY LIGHT**

Clarity Grade

**BROWN**

Polish

**VS 1**

Symmetry

**VERY GOOD**

Fluorescence

**GOOD**

Inscription(s)

**NONE**

Comments: This Laboratory Grown Diamond was created by Chemical Vapor Deposition (CVD) growth process. Indications of post-growth treatment.



THIS DOCUMENT WAS PRODUCED WITH THE FOLLOWING SECURITY MEASURES: SPECIAL DOCUMENT PAPER, INK SCREENS, WATERMARK, BACKGROUND DESIGNS, HOLOGRAM AND OTHER SECURITY FEATURES NOT LISTED AND DO EXCEED DOCUMENT SECURITY INDUSTRY GUIDELINES.