



**ELECTRONIC COPY**

Report verification at [igi.org](http://igi.org)

**DIAMOND REPORT**

June 17, 2025  
 IGI Report Number  
 Description **NATURAL DIAMOND**  
 Shape and Cutting Style **MARQUISE BRILLIANT**  
 Measurements **21.06 X 11.11 X 6.87 MM**

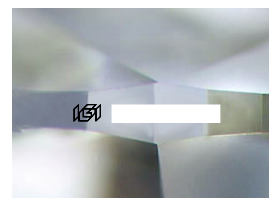
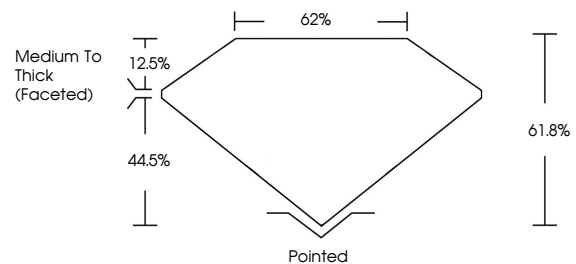
**GRADING RESULTS**

Carat Weight **9.52 CARATS**  
 Color Grade **J**  
 Clarity Grade **I 1**  
 Cut Grade **VERY GOOD**

**ADDITIONAL GRADING INFORMATION**

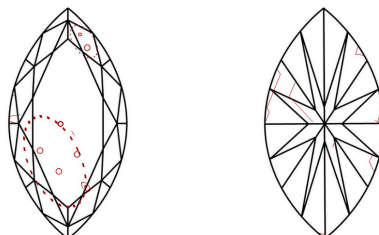
Polish **EXCELLENT**  
 Symmetry **EXCELLENT**  
 Fluorescence **VERY SLIGHT**  
 Inscription(s)

**PROPORTIONS**



Sample Image Used

**CLARITY CHARACTERISTICS**



**KEY TO SYMBOLS**

Red symbols indicate internal characteristics.  
 Green symbols indicate external characteristics.

**COLOR**

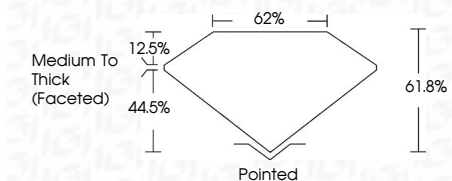
D - F	G - J	K - M	N - R	S - Z	FANCY
Colorless	Near Colorless	Slightly Tinted	Very Light Color	Light Color	

**CLARITY**

IF	VVS <sup>1-2</sup>	VS <sup>1-2</sup>	SI <sup>1-2</sup>	I <sup>1-3</sup>
Internally Flawless	Very Very Slightly Included	Very Slightly Included	Slightly Included	Included



June 17, 2025  
 IGI Report Number  
 Description **NATURAL DIAMOND**  
 Shape and Cutting Style **MARQUISE BRILLIANT**  
 Measurements **21.06 X 11.11 X 6.87 MM**  
**GRADING RESULTS**  
 Carat Weight **9.52 CARATS**  
 Color Grade **J**  
 Clarity Grade **I 1**  
 Cut Grade **VERY GOOD**



**ADDITIONAL GRADING INFORMATION**

Polish **EXCELLENT**  
 Symmetry **EXCELLENT**  
 Fluorescence **VERY SLIGHT**  
 Inscription(s)



**IGI**



June 17, 2025  
 IGI Report No  
**MARQUISE BRILLIANT**  
**21.06 X 11.11 X 6.87 MM**  
 Carat Weight **9.52 CARATS**  
 Color Grade **J**  
 Clarity Grade **I 1**  
 Depth **61.8%**  
 Table **62%**  
 Girdle **Medium To Thick (Faceted)**  
 Culet **Pointed**  
 Polish **EXCELLENT**  
 Symmetry **EXCELLENT**  
 Fluorescence **VERY SLIGHT**  
 Inscription(s)