



ELECTRONIC COPY

Report verification at igi.org



April 11, 2026
IGI Report Number
Description LABORATORY GROWN DIAMOND
Shape and Cutting Style PEAR MODIFIED BRILLIANT
Measurements 8.31 X 4.87 X 3.15 MM
GRADING RESULTS
Carat Weight 1.00 CARAT
Color Grade FANCY VIVID GREEN
Clarity Grade VVS 2

LABORATORY GROWN DIAMOND REPORT

April 11, 2026
IGI Report Number
Description LABORATORY GROWN DIAMOND
Shape and Cutting Style PEAR MODIFIED BRILLIANT
Measurements 8.31 X 4.87 X 3.15 MM

GRADING RESULTS

Carat Weight 1.00 CARAT
Color Grade FANCY VIVID GREEN
Clarity Grade VVS 2

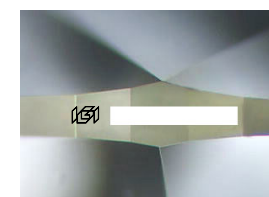
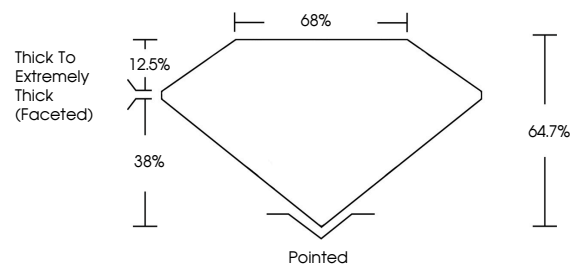
ADDITIONAL GRADING INFORMATION

Polish VERY GOOD
Symmetry VERY GOOD
Fluorescence NONE

Inscription(s) IGI

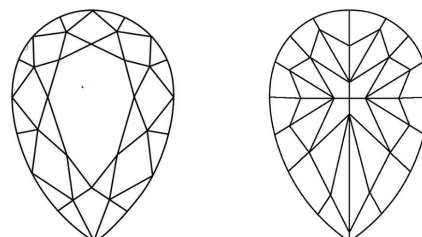
Comments: This Laboratory Grown Diamond was created by Chemical Vapor Deposition (CVD) growth process. Indications of post-growth treatment.

PROPORTIONS



Sample Image Used

CLARITY CHARACTERISTICS



KEY TO SYMBOLS

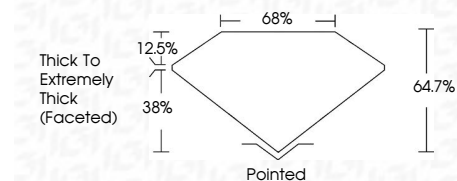
Red symbols indicate internal characteristics.
Green symbols indicate external characteristics.

COLOR

D E F G H I J Faint Very Light Light

CLARITY

FL IF VVS 1-2 VS 1-2 SI 1-2 I 1-3
Flawless Internally Flawless Very Very Slightly Included Very Slightly Included Slightly Included Included



ADDITIONAL GRADING INFORMATION

Polish VERY GOOD
Symmetry VERY GOOD
Fluorescence NONE

Inscription(s) IGI
Comments: This Laboratory Grown Diamond was created by Chemical Vapor Deposition (CVD) growth process. Indications of post-growth treatment.



Summary of report details including date, report number, description, measurements, grading results, and additional information.

Comments: This Laboratory Grown Diamond was created by Chemical Vapor Deposition (CVD) growth process. Indications of post-growth treatment.