



**INTERNATIONAL
GEMOLOGICAL
INSTITUTE**

ELECTRONIC COPY

LABORATORY GROWN DIAMOND REPORT

October 21, 2024	
IGI Report Number	
Description	LABORATORY GROWN DIAMOND
Shape and Cutting Style	HEXAGONAL MODIFIED BRILLIANT
Measurements	11.52 X 8.05 X 5.00 MM

GRADING RESULTS

Carat Weight	3.07 CARATS
Color Grade	E
Clarity Grade	VVS 2

ADDITIONAL GRADING INFORMATION

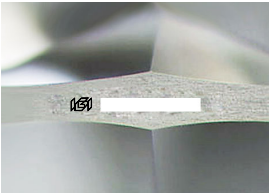
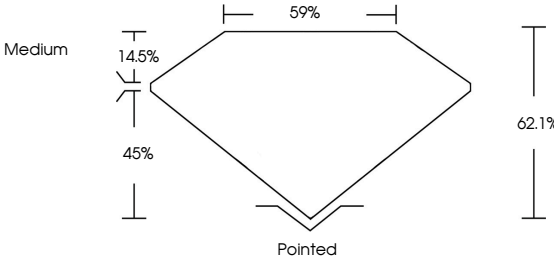
Polish	EXCELLENT
Symmetry	EXCELLENT
Fluorescence	NONE

Inscription(s)

Comments: This Laboratory Grown Diamond was created by Chemical Vapor Deposition (CVD) growth process.
Type IIa

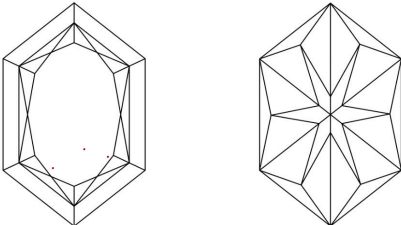
Report verification at igi.org

PROPORTIONS



Sample Image Used

CLARITY CHARACTERISTICS



KEY TO SYMBOLS

Red symbols indicate internal characteristics.
Green symbols indicate external characteristics.

COLOR

D E F G H I J Faint Very Light Light

CLARITY

IF	VVS ¹⁻²	VS ¹⁻²	SI ¹⁻²	I ¹⁻³
Internally Flawless	Very Very Slightly Included	Very Slightly Included	Slightly Included	Included

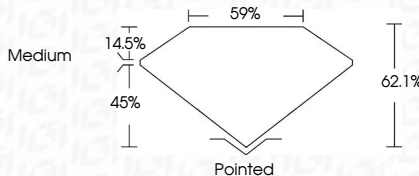


© IGI 2020, International Gemological Institute

FD - 10 20

LABORATORY GROWN DIAMOND REPORT

October 21, 2024	
IGI Report Number	
Description	LABORATORY GROWN DIAMOND
Shape and Cutting Style	HEXAGONAL MODIFIED BRILLIANT
Measurements	11.52 X 8.05 X 5.00 MM
GRADING RESULTS	
Carat Weight	3.07 CARATS
Color Grade	F
Clarity Grade	VVS 2



ADDITIONAL GRADING INFORMATION

Polish	EXCELLENT
Symmetry	EXCELLENT
Fluorescence	NONE
Inscription(s)	

Comments: This Laboratory Grown Diamond was created by Chemical Vapor Deposition (CVD) growth process.
Type IIa



IGI

October 21, 2024	GI Report No.	HEXAGONAL MODIFIED BRILLIANT
		3.07
	Card Weight	1.162 ± 0.05 X 5.00 MM
	Color Grade	
	Clarity Grade	
	Depth	
	Table	
	Girdle	
	Color	
	Fluorescence	
	Inscriptions	
	Comments:	
		Grown Diamond, created by Chemical Vapor Deposition (CVD) growth process.

Comments:
This Laboratory Grown Diamond was
created by Chemical Vapor Deposition
(CVD) growth process.

www.igi.org

THIS DOCUMENT WAS PRODUCED WITH THE FOLLOWING SECURITY MEASURES: SPECIAL DOCUMENT PAPER, INK SCREENS, WATERMARK, BACKGROUND DESIGNS, HOLOGRAM AND OTHER SECURITY FEATURES NOT LISTED AND DO EXCEED DOCUMENT SECURITY INDUSTRY GUIDELINES