



ELECTRONIC COPY

Report verification at igi.org

DIAMOND REPORT

April 28, 2026
 IGI Report Number
 Description **NATURAL DIAMOND**
 Shape and Cutting Style **EMERALD CUT**
 Measurements **9.33 X 6.64 X 4.51 MM**

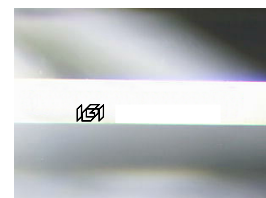
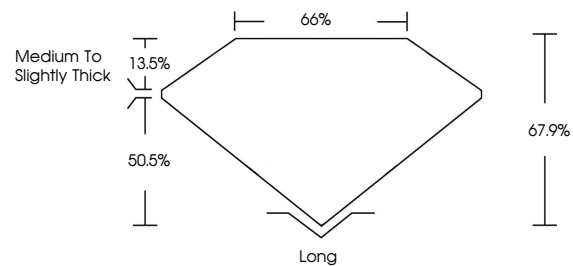
GRADING RESULTS

Carat Weight **2.73 CARATS**
 Color Grade **L**
 Clarity Grade **VVS 1**
 Cut Grade **EXCELLENT**

ADDITIONAL GRADING INFORMATION

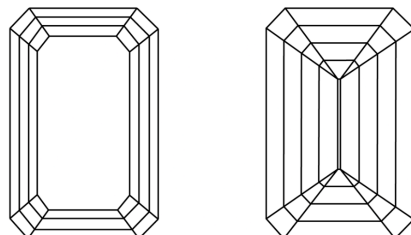
Polish **EXCELLENT**
 Symmetry **EXCELLENT**
 Fluorescence **NONE**
 Inscription(s)

PROPORTIONS



Sample Image Used

CLARITY CHARACTERISTICS



KEY TO SYMBOLS

Red symbols indicate internal characteristics.
 Green symbols indicate external characteristics.

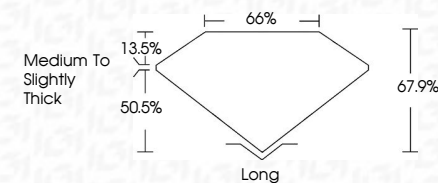
COLOR

| D - F | G - J | K - M | N - R | S - Z | FANCY |
|-----------|----------------|-----------------|------------------|-------------|-------|
| Colorless | Near Colorless | Slightly Tinted | Very Light Color | Light Color | |

CLARITY

| FL | IF | VVS 1-2 | VS 1-2 | SI 1-2 | I 1-3 |
|----------|---------------------|-----------------------------|------------------------|-------------------|----------|
| Flawless | Internally Flawless | Very Very Slightly Included | Very Slightly Included | Slightly Included | Included |

April 28, 2026
 IGI Report Number
 Description **NATURAL DIAMOND**
 Shape and Cutting Style **EMERALD CUT**
 Measurements **9.33 X 6.64 X 4.51 MM**
GRADING RESULTS
 Carat Weight **2.73 CARATS**
 Color Grade **L**
 Clarity Grade **VVS 1**
 Cut Grade **EXCELLENT**



ADDITIONAL GRADING INFORMATION

Polish **EXCELLENT**
 Symmetry **EXCELLENT**
 Fluorescence **NONE**
 Inscription(s)



IGI



April 28, 2026
 IGI Report No
EMERALD CUT
 9.33 X 6.64 X 4.51 MM
 2.73 CARATS
 L
 VVS 1
 EXCELLENT
 67.9%
 66%
 Medium To Slightly Thick
 Long
 EXCELLENT
 EXCELLENT
 NONE