



ELECTRONIC COPY

LABORATORY GROWN DIAMOND REPORT

December 26, 2023
IGI Report Number
Description LABORATORY GROWN DIAMOND
Shape and Cutting Style OVAL BRILLIANT
Measurements 10.71 X 7.66 X 4.88 MM

GRADING RESULTS

Carat Weight 2.56 CARATS
Color Grade FANCY VIVID BLUE
Clarity Grade VS 2

ADDITIONAL GRADING INFORMATION

Polish EXCELLENT
Symmetry VERY GOOD
Fluorescence NONE

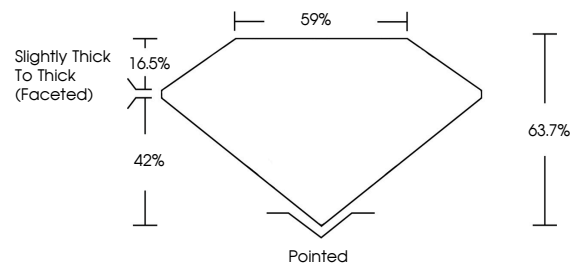
Inscription(s) IGI

Comments: This Laboratory Grown Diamond was created by Chemical Vapor Deposition (CVD) growth process.
Indications of post-growth treatment.

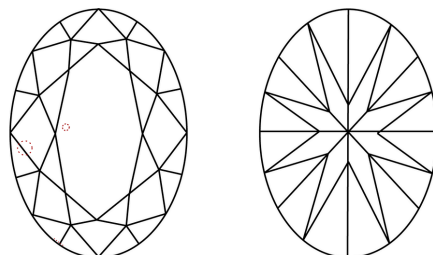
LABORATORY GROWN DIAMOND REPORT

Report verification at igi.org

PROPORTIONS



CLARITY CHARACTERISTICS



KEY TO SYMBOLS

Red symbols indicate internal characteristics.
Green symbols indicate external characteristics.

LABORATORY GROWN DIAMOND REPORT

GRADING SCALES

CLARITY

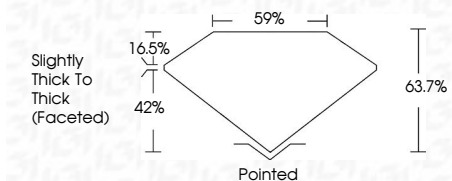
Table mapping clarity grades (IF, VVS 1-2, VS 1-2, SI 1-2, I 1-3) to descriptions (Internally Flawless, Very Very Slightly Included, Very Slightly Included, Slightly Included, Included).

COLOR

Table mapping color grades (D, E, F, G, H, I, J, Faint, Very Light, Light) to descriptions (Light Tint, Fancy Light, Fancy, Fancy Intense, Fancy Vivid).

LABORATORY GROWN DIAMOND REPORT

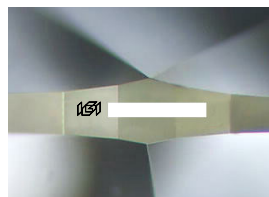
December 26, 2023
IGI Report Number
Description LABORATORY GROWN DIAMOND
Shape and Cutting Style OVAL BRILLIANT
Measurements 10.71 X 7.66 X 4.88 MM
GRADING RESULTS
Carat Weight 2.56 CARATS
Color Grade FANCY VIVID BLUE
Clarity Grade VS 2



ADDITIONAL GRADING INFORMATION

Polish EXCELLENT
Symmetry VERY GOOD
Fluorescence NONE
Inscription(s) IGI

Comments: This Laboratory Grown Diamond was created by Chemical Vapor Deposition (CVD) growth process.
Indications of post-growth treatment.



Sample Image Used



Summary of report details including date, report number, measurements, carat weight, color grade, clarity grade, and grading results.

Comments: This Laboratory Grown Diamond was created by Chemical Vapor Deposition (CVD) growth process. Indications of post-growth treatment.