



ELECTRONIC COPY

Report verification at igi.org

LABORATORY GROWN DIAMOND REPORT

August 16, 2024
 IGI Report Number
 Description **LABORATORY GROWN DIAMOND**
 Shape and Cutting Style **ROUND BRILLIANT**
 Measurements **7.24 - 7.29 X 4.32 MM**

GRADING RESULTS

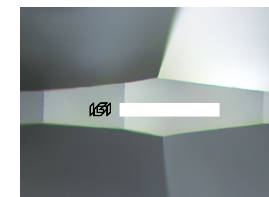
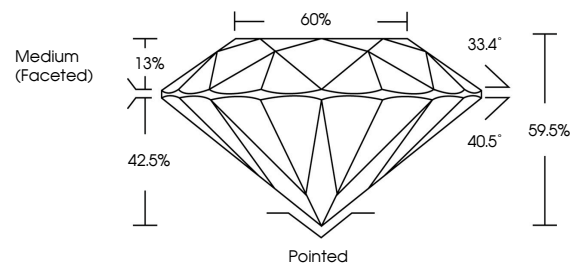
Carat Weight **1.40 CARAT**
 Color Grade **FANCY LIGHT BROWN PINK**
 Clarity Grade **VS 1**
 Cut Grade **IDEAL**

ADDITIONAL GRADING INFORMATION

Polish **EXCELLENT**
 Symmetry **EXCELLENT**
 Fluorescence **SLIGHT**
 Inscription(s) 

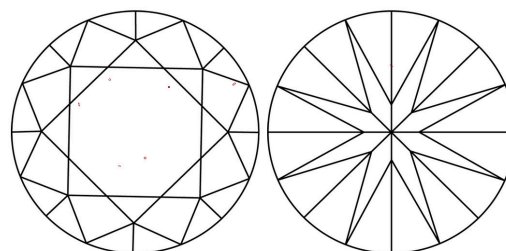
Comments: This Laboratory Grown Diamond was created by Chemical Vapor Deposition (CVD) growth process.
 Indications of post-growth treatment.

PROPORTIONS



Sample Image Used

CLARITY CHARACTERISTICS



KEY TO SYMBOLS

Red symbols indicate internal characteristics.
 Green symbols indicate external characteristics.

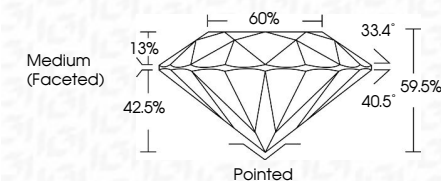
COLOR

D E F G H I J Faint Very Light Light

CLARITY

IF	VS ¹⁻²	VS ¹⁻²	SI ¹⁻²	I ¹⁻³
Internally Flawless	Very Very Slightly Included	Very Slightly Included	Slightly Included	Included

August 16, 2024
 IGI Report Number
 Description **LABORATORY GROWN DIAMOND**
 Shape and Cutting Style **ROUND BRILLIANT**
 Measurements **7.24 - 7.29 X 4.32 MM**
GRADING RESULTS
 Carat Weight **1.40 CARAT**
 Color Grade **FANCY LIGHT BROWN PINK**
 Clarity Grade **VS 1**
 Cut Grade **IDEAL**



ADDITIONAL GRADING INFORMATION

Polish **EXCELLENT**
 Symmetry **EXCELLENT**
 Fluorescence **SLIGHT**
 Inscription(s) 
 Comments: This Laboratory Grown Diamond was created by Chemical Vapor Deposition (CVD) growth process.
 Indications of post-growth treatment.



August 16, 2024	1.40 CARAT	Pointed
IGI Report No	FANCY LIGHT BROWN PINK	EXCELLENT
ROUND BRILLIANT	VS 1	EXCELLENT
7.24 - 7.29 X 4.32 MM	IDEAL	SLIGHT
Carat Weight	59.5%	
Color Grade	60%	
Clarity Grade	Medium (Faceted)	
Cut Grade		
Depth		
Table		
Grille		
Polish		
Symmetry		
Fluorescence		
Inscriptions(s)		

Comments: This Laboratory Grown Diamond was created by Chemical Vapor Deposition (CVD) growth process.
 Indications of post-growth treatment.