



Report verification at [igi.org](http://igi.org)

**ELECTRONIC COPY**

**DIAMOND REPORT**

September 30, 2025  
 IGI Report Number  
 Description **NATURAL DIAMOND**  
 Shape and Cutting Style **MARQUISE BRILLIANT**  
 Measurements **10.92 X 5.01 X 3.34 MM**

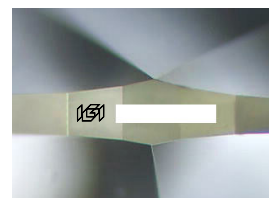
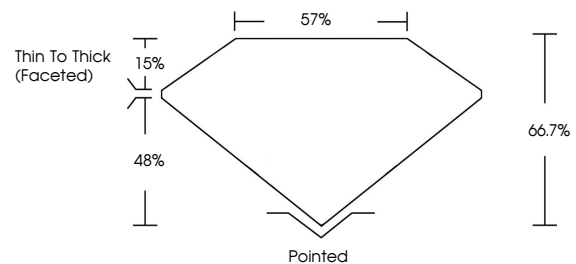
**GRADING RESULTS**

Carat Weight **1.01 CARAT**  
 Color Grade **K**  
 Clarity Grade **VS 2**  
 Cut Grade **VERY GOOD**

**ADDITIONAL GRADING INFORMATION**

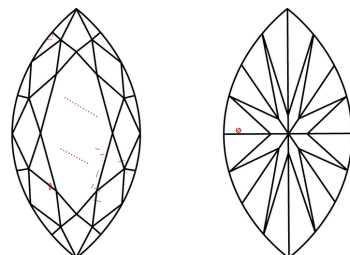
Polish **EXCELLENT**  
 Symmetry **EXCELLENT**  
 Fluorescence **NONE**  
 Inscription(s)

**PROPORTIONS**



Sample Image Used

**CLARITY CHARACTERISTICS**



**KEY TO SYMBOLS**

Red symbols indicate internal characteristics.  
 Green symbols indicate external characteristics.

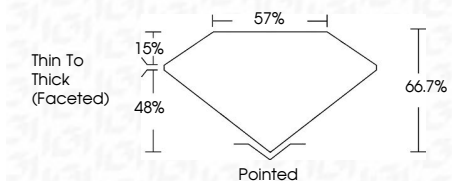
**COLOR**

D - F	G - J	K - M	N - R	S - Z	FANCY
Colorless	Near Colorless	Slightly Tinted	Very Light Color	Light Color	

**CLARITY**

IF	VVS <sup>1-2</sup>	VS <sup>1-2</sup>	SI <sup>1-2</sup>	I <sup>1-3</sup>
Internally Flawless	Very Very Slightly Included	Very Slightly Included	Slightly Included	Included

September 30, 2025  
 IGI Report Number  
 Description **NATURAL DIAMOND**  
 Shape and Cutting Style **MARQUISE BRILLIANT**  
 Measurements **10.92 X 5.01 X 3.34 MM**  
**GRADING RESULTS**  
 Carat Weight **1.01 CARAT**  
 Color Grade **K**  
 Clarity Grade **VS 2**  
 Cut Grade **VERY GOOD**



**ADDITIONAL GRADING INFORMATION**

Polish **EXCELLENT**  
 Symmetry **EXCELLENT**  
 Fluorescence **NONE**  
 Inscription(s)



**IGI**



September 30, 2025	1.01 CARAT	K	VS 2	66.7%	57%	Pointed
IGI Report No	10.92 X 5.01 X 3.34 MM	VERY GOOD	66.7%	57%	EXCELLENT	EXCELLENT
MARQUISE BRILLIANT					EXCELLENT	NONE
Carat Weight						
Color Grade						
Clarity Grade						
Cut Grade						
Depth						
Table						
Girdle						
Culet						
Polish						
Symmetry						
Fluorescence						
Inscriptions(s)						