



ELECTRONIC COPY

Report verification at igi.org

LABORATORY GROWN DIAMOND REPORT

June 23, 2025
IGI Report Number
Description LABORATORY GROWN DIAMOND
Shape and Cutting Style OVAL BRILLIANT
Measurements 10.17 X 7.10 X 4.44 MM

GRADING RESULTS

Carat Weight 2.00 CARATS
Color Grade FANCY VIVID PINK
Clarity Grade VS 2

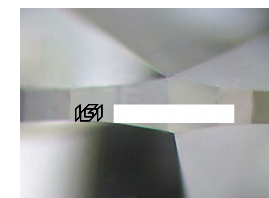
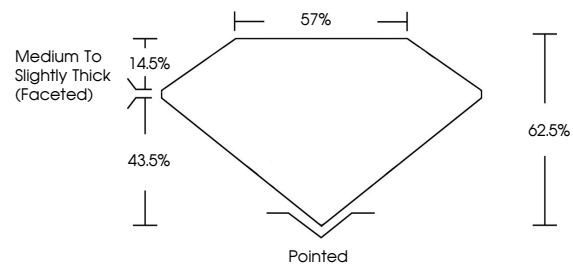
ADDITIONAL GRADING INFORMATION

Polish EXCELLENT
Symmetry VERY GOOD
Fluorescence STRONG

Inscription(s) IGI

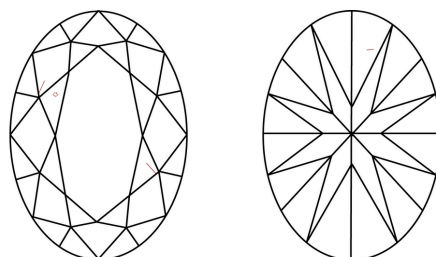
Comments: This Laboratory Grown Diamond was created by Chemical Vapor Deposition (CVD) growth process. Indications of post-growth treatment.

PROPORTIONS



Sample Image Used

CLARITY CHARACTERISTICS



KEY TO SYMBOLS

Red symbols indicate internal characteristics. Green symbols indicate external characteristics.

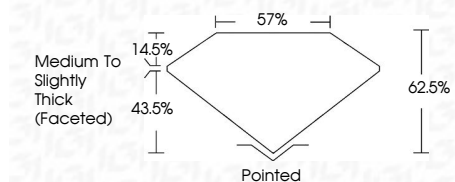
COLOR

D E F G H I J Faint Very Light Light

CLARITY

Table with 5 columns: IF, VS 1-2, VS 1-2, SI 1-2, I 1-3. Below it, a row for Internally Flawless, Very Very Slightly Included, Very Slightly Included, Slightly Included, and Included.

June 23, 2025
IGI Report Number
Description LABORATORY GROWN DIAMOND
Shape and Cutting Style OVAL BRILLIANT
Measurements 10.17 X 7.10 X 4.44 MM
GRADING RESULTS
Carat Weight 2.00 CARATS
Color Grade FANCY VIVID PINK
Clarity Grade VS 2



ADDITIONAL GRADING INFORMATION

Polish EXCELLENT
Symmetry VERY GOOD
Fluorescence STRONG

Inscription(s) IGI
Comments: This Laboratory Grown Diamond was created by Chemical Vapor Deposition (CVD) growth process. Indications of post-growth treatment.



Summary table with columns: Date, Report No, Shape, Carat Weight, Color Grade, Clarity Grade, Table, Girdle, Culet, Polish, Symmetry, Fluorescence, Inscription(s). Includes a comment about CVD growth process and post-growth treatment.