



ELECTRONIC COPY

Report verification at igi.org

DIAMOND REPORT

July 28, 2025
IGI Report Number
Description **NATURAL DIAMOND**
Shape and Cutting Style **OVAL BRILLIANT**
Measurements **10.09 X 7.07 X 4.44 MM**

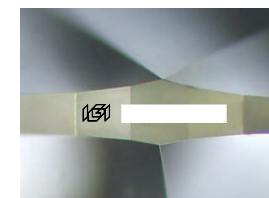
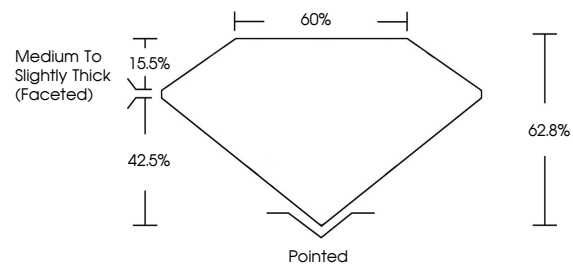
GRADING RESULTS

Carat Weight **2.01 CARATS**
Color Grade **I**
Clarity Grade **VVS 1**
Cut Grade **VERY GOOD**

ADDITIONAL GRADING INFORMATION

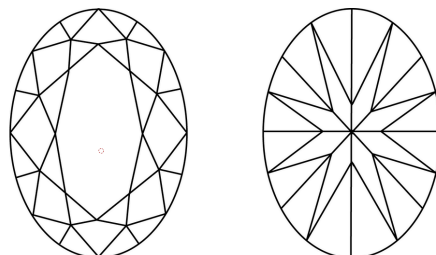
Polish **EXCELLENT**
Symmetry **EXCELLENT**
Fluorescence **VERY SLIGHT**
Inscription(s)

PROPORTIONS



Sample Image Used

CLARITY CHARACTERISTICS



KEY TO SYMBOLS

Red symbols indicate internal characteristics.
Green symbols indicate external characteristics.

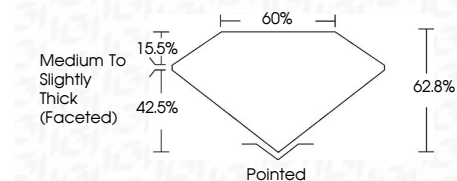
COLOR

D - F	G - J	K - M	N - R	S - Z	FANCY
Colorless	Near Colorless	Slightly Tinted	Very Light Color	Light Color	

CLARITY

IF	VVS ¹⁻²	VS ¹⁻²	SI ¹⁻²	I ¹⁻³
Internally Flawless	Very Very Slightly Included	Very Slightly Included	Slightly Included	Included

July 28, 2025
IGI Report Number
Description **NATURAL DIAMOND**
Shape and Cutting Style **OVAL BRILLIANT**
Measurements **10.09 X 7.07 X 4.44 MM**
GRADING RESULTS
Carat Weight **2.01 CARATS**
Color Grade **I**
Clarity Grade **VVS 1**
Cut Grade **VERY GOOD**



ADDITIONAL GRADING INFORMATION

Polish **EXCELLENT**
Symmetry **EXCELLENT**
Fluorescence **VERY SLIGHT**
Inscription(s)



July 28, 2025
IGI Report No
OVAL BRILLIANT
10.09 X 7.07 X 4.44 MM
2.01 CARATS
I
VERY GOOD
VVS 1
62.8%
60%
Medium To Slightly Thick (Faceted)
Pointed
EXCELLENT
EXCELLENT
VERY SLIGHT

Culet
Polish
Symmetry
Fluorescence
Inscriptions(s)