



ELECTRONIC COPY

Report verification at igi.org

DIAMOND REPORT

July 2, 2025
IGI Report Number
Description NATURAL DIAMOND
Shape and Cutting Style ROUND BRILLIANT
Measurements 9.33 - 9.38 X 5.95 MM

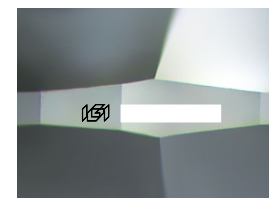
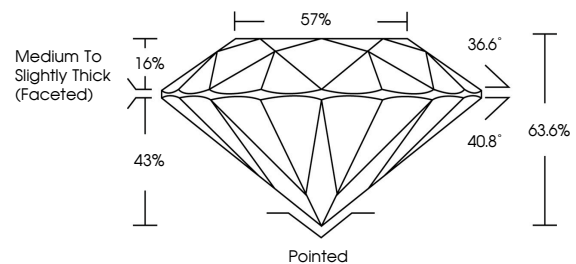
GRADING RESULTS

Carat Weight 3.30 CARATS
Color Grade I
Clarity Grade VS 2
Cut Grade EXCELLENT

ADDITIONAL GRADING INFORMATION

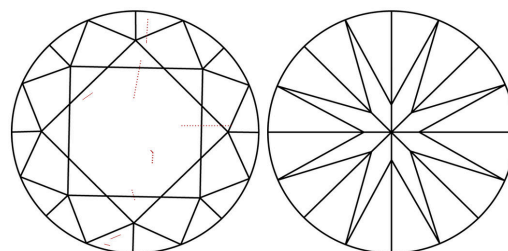
Polish EXCELLENT
Symmetry EXCELLENT
Fluorescence NONE
Inscription(s) IGI

PROPORTIONS



Sample Image Used

CLARITY CHARACTERISTICS



KEY TO SYMBOLS

Red symbols indicate internal characteristics.
Green symbols indicate external characteristics.

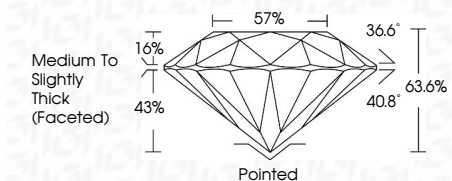
COLOR

Table with 6 columns: D-F, G-J, K-M, N-R, S-Z, FANCY. Row 1: Colorless, Near Colorless, Slightly Tinted, Very Light Color, Light Color.

CLARITY

Table with 5 columns: IF, VS 1-2, VS 1-2, SI 1-2, I 1-3. Row 1: Internally Flawless, Very Very Slightly Included, Very Slightly Included, Slightly Included, Included.

July 2, 2025
IGI Report Number
Description NATURAL DIAMOND
Shape and Cutting Style ROUND BRILLIANT
Measurements 9.33 - 9.38 X 5.95 MM
GRADING RESULTS
Carat Weight 3.30 CARATS
Color Grade I
Clarity Grade VS 2
Cut Grade EXCELLENT



ADDITIONAL GRADING INFORMATION

Polish EXCELLENT
Symmetry EXCELLENT
Fluorescence NONE
Inscription(s) IGI



IGI



July 2, 2025
IGI Report No ROUND BRILLIANT
9.33 - 9.38 X 5.95 MM
3.30 CARATS
I
VS 2
EXCELLENT
63.6%
57%
Medium To Slightly Thick (Faceted)
Pointed
EXCELLENT
EXCELLENT
NONE
IGI