



**ELECTRONIC COPY**

Report verification at [igi.org](http://igi.org)



February 13, 2025  
 IGI Report Number  
 Description **LABORATORY GROWN DIAMOND**  
 Shape and Cutting Style **PEAR MODIFIED BRILLIANT**  
 Measurements **11.96 X 7.12 X 4.52 MM**  
**GRADING RESULTS**  
 Carat Weight **2.73 CARATS**  
 Color Grade **FANCY INTENSE GREYISH YELLOW**  
 Clarity Grade **VS 2**

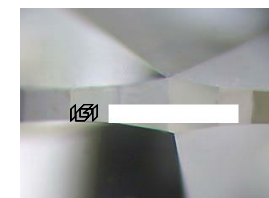
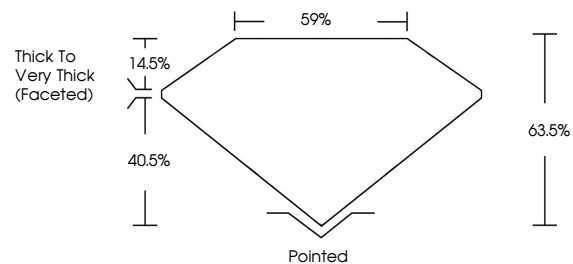
February 13, 2025  
 IGI Report Number  
 Description **LABORATORY GROWN DIAMOND**  
 Shape and Cutting Style **PEAR MODIFIED BRILLIANT**  
 Measurements **11.96 X 7.12 X 4.52 MM**

**GRADING RESULTS**  
 Carat Weight **2.73 CARATS**  
 Color Grade **FANCY INTENSE GREYISH YELLOW**  
 Clarity Grade **VS 2**

**ADDITIONAL GRADING INFORMATION**  
 Polish **EXCELLENT**  
 Symmetry **EXCELLENT**  
 Fluorescence **NONE**  
 Inscription(s)

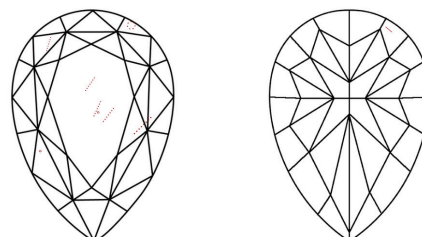
Comments: This Laboratory Grown Diamond was created by Chemical Vapor Deposition (CVD) growth process.

**PROPORTIONS**



Sample Image Used

**CLARITY CHARACTERISTICS**



**KEY TO SYMBOLS**

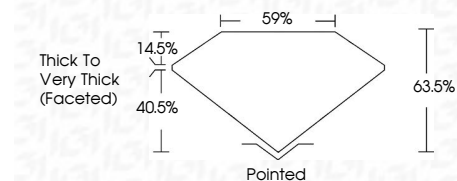
Red symbols indicate internal characteristics.  
 Green symbols indicate external characteristics.

**COLOR**

D E F G H I J Faint Very Light Light

**CLARITY**

IF	VS <sup>1-2</sup>	VS <sup>1-2</sup>	SI <sup>1-2</sup>	I <sup>1-3</sup>
Internally Flawless	Very Very Slightly Included	Very Slightly Included	Slightly Included	Included



**ADDITIONAL GRADING INFORMATION**

Polish **EXCELLENT**  
 Symmetry **EXCELLENT**  
 Fluorescence **NONE**  
 Inscription(s)   
 Comments: This Laboratory Grown Diamond was created by Chemical Vapor Deposition (CVD) growth process.



February 13, 2025  
 IGI Report No **PEAR MODIFIED BRILLIANT**  
 11.96 X 7.12 X 4.52 MM  
 Carat Weight **2.73 CARATS**  
 Color Grade **FANCY INTENSE GREYISH YELLOW**  
 Clarity Grade **VS 2**  
 Depth **63.5%**  
 Table **59%**  
 Girdle **Thick to Very Thick (Faceted)**  
 Culet **Pointed**  
 Polish **EXCELLENT**  
 Symmetry **EXCELLENT**  
 Fluorescence **NONE**  
 Inscription(s)

Comments: This Laboratory Grown Diamond was created by Chemical Vapor Deposition (CVD) growth process.