



Report verification at igi.org

ELECTRONIC COPY

DIAMOND REPORT

August 18, 2025
 IGI Report Number
 Description **NATURAL DIAMOND**
 Shape and Cutting Style **PEAR MODIFIED BRILLIANT**
 Measurements **8.79 X 5.64 X 3.48 MM**

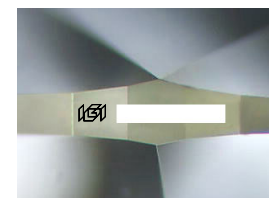
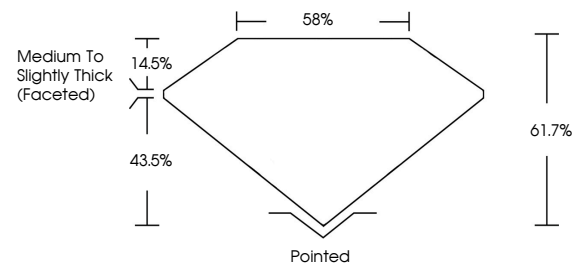
GRADING RESULTS

Carat Weight **1.03 CARAT**
 Color Grade **J**
 Clarity Grade **VVS 2**
 Cut Grade **EXCELLENT**

ADDITIONAL GRADING INFORMATION

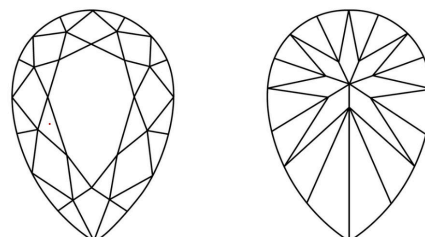
Polish **EXCELLENT**
 Symmetry **EXCELLENT**
 Fluorescence **NONE**
 Inscription(s)

PROPORTIONS



Sample Image Used

CLARITY CHARACTERISTICS



KEY TO SYMBOLS

Red symbols indicate internal characteristics.
 Green symbols indicate external characteristics.

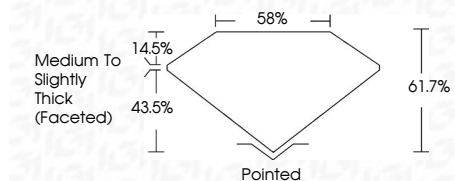
COLOR

D - F	G - J	K - M	N - R	S - Z	FANCY
Colorless	Near Colorless	Slightly Tinted	Very Light Color	Light Color	

CLARITY

IF	VVS ¹⁻²	VS ¹⁻²	SI ¹⁻²	I ¹⁻³
Internally Flawless	Very Very Slightly Included	Very Slightly Included	Slightly Included	Included

August 18, 2025
 IGI Report Number
 Description **NATURAL DIAMOND**
 Shape and Cutting Style **PEAR MODIFIED BRILLIANT**
 Measurements **8.79 X 5.64 X 3.48 MM**
GRADING RESULTS
 Carat Weight **1.03 CARAT**
 Color Grade **J**
 Clarity Grade **VVS 2**
 Cut Grade **EXCELLENT**



ADDITIONAL GRADING INFORMATION

Polish **EXCELLENT**
 Symmetry **EXCELLENT**
 Fluorescence **NONE**
 Inscription(s)



IGI



August 18, 2025
 IGI Report No
PEAR MODIFIED BRILLIANT
 8.79 X 5.64 X 3.48 MM
 Carat Weight **1.03 CARAT**
 Color Grade **J**
 Clarity Grade **VVS 2**
 Cut Grade **EXCELLENT**
 Depth **61.7%**
 Table **58%**
 Girdle **Medium To Slightly Thick (Faceted)**
 Culet **Pointed**
 Polish **EXCELLENT**
 Symmetry **EXCELLENT**
 Fluorescence **NONE**
 Inscription(s)