



ELECTRONIC COPY

Report verification at igi.org



December 19, 2025
 IGI Report Number
 Description **LABORATORY GROWN DIAMOND**
 Shape and Cutting Style **PEAR MODIFIED BRILLIANT**
 Measurements **7.90 X 5.22 X 3.60 MM**
GRADING RESULTS
 Carat Weight **1.08 CARAT**
 Color Grade **FANCY VIVID PINK**
 Clarity Grade **VS 2**

LABORATORY GROWN DIAMOND REPORT

December 19, 2025
 IGI Report Number
 Description **LABORATORY GROWN DIAMOND**
 Shape and Cutting Style **PEAR MODIFIED BRILLIANT**
 Measurements **7.90 X 5.22 X 3.60 MM**

GRADING RESULTS

Carat Weight **1.08 CARAT**
 Color Grade **FANCY VIVID PINK**
 Clarity Grade **VS 2**

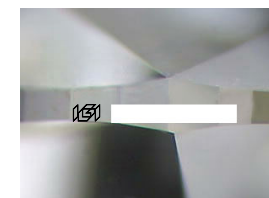
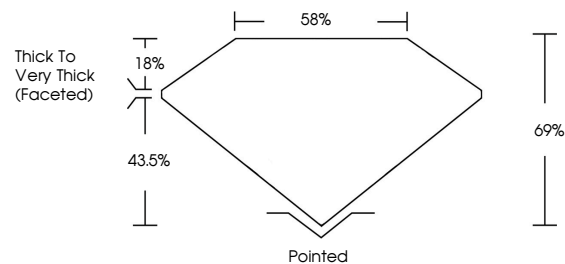
ADDITIONAL GRADING INFORMATION

Polish **EXCELLENT**
 Symmetry **EXCELLENT**
 Fluorescence **SLIGHT**

Inscription(s)

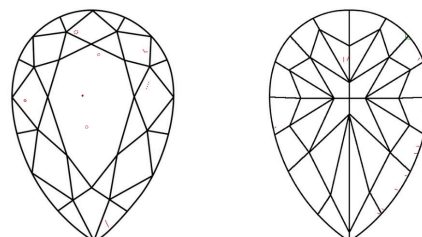
Comments: This Laboratory Grown Diamond was created by Chemical Vapor Deposition (CVD) growth process. Indications of post-growth treatment.

PROPORTIONS



Sample Image Used

CLARITY CHARACTERISTICS



KEY TO SYMBOLS

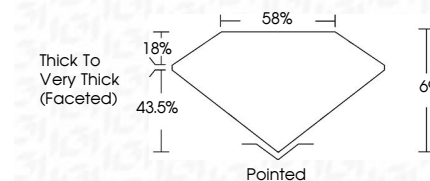
Red symbols indicate internal characteristics.
 Green symbols indicate external characteristics.

COLOR

D E F G H I J Faint Very Light Light

CLARITY

FL	IF	VS ¹⁻²	VS ¹⁻²	SI ¹⁻²	I ¹⁻³
Flawless	Internally Flawless	Very Very Slightly Included	Very Slightly Included	Slightly Included	Included



ADDITIONAL GRADING INFORMATION

Polish **EXCELLENT**
 Symmetry **EXCELLENT**
 Fluorescence **SLIGHT**

Inscription(s)
 Comments: This Laboratory Grown Diamond was created by Chemical Vapor Deposition (CVD) growth process. Indications of post-growth treatment.



December 19, 2025
 IGI Report No **PEAR MODIFIED BRILLIANT**
 Carat Weight **1.08 CARAT**
 Color Grade **FANCY VIVID PINK**
 Clarity Grade **VS 2**
 Depth **69%**
 Table **18%**
 Girdle **Thick to Very Thick (Faceted)**
 Culet **Pointed**
 Polish **EXCELLENT**
 Symmetry **EXCELLENT**
 Fluorescence **SLIGHT**
 Inscription(s)

Comments: This Laboratory Grown Diamond was created by Chemical Vapor Deposition (CVD) growth process. Indications of post-growth treatment.