



ELECTRONIC COPY

Report verification at igi.org

DIAMOND REPORT

May 5, 2026
 IGI Report Number
 Description **NATURAL DIAMOND**
 Shape and Cutting Style **OVAL BRILLIANT**
 Measurements **8.86 X 6.25 X 4.07 MM**

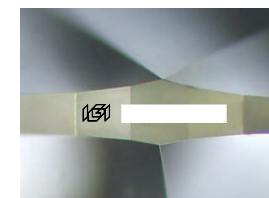
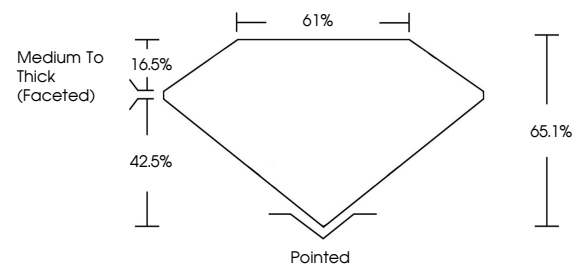
GRADING RESULTS

Carat Weight **1.51 CARAT**
 Color Grade **J**
 Clarity Grade **VS 2**
 Cut Grade **VERY GOOD**

ADDITIONAL GRADING INFORMATION

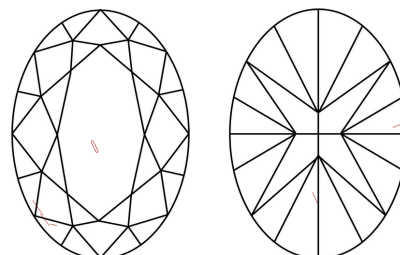
Polish **EXCELLENT**
 Symmetry **EXCELLENT**
 Fluorescence **NONE**
 Inscription(s)

PROPORTIONS



Sample Image Used

CLARITY CHARACTERISTICS



KEY TO SYMBOLS

Red symbols indicate internal characteristics.
 Green symbols indicate external characteristics.

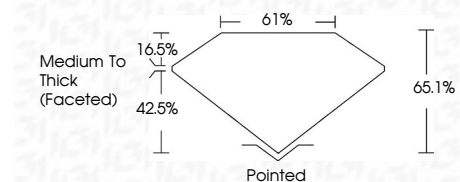
COLOR

D - F	G - J	K - M	N - R	S - Z	FANCY
Colorless	Near Colorless	Slightly Tinted	Very Light Color	Light Color	

CLARITY

FL	IF	VVS ¹⁻²	VS ¹⁻²	SI ¹⁻²	I ¹⁻³
Flawless	Internally Flawless	Very Very Slightly Included	Very Slightly Included	Slightly Included	Included

May 5, 2026
 IGI Report Number
 Description **NATURAL DIAMOND**
 Shape and Cutting Style **OVAL BRILLIANT**
 Measurements **8.86 X 6.25 X 4.07 MM**
GRADING RESULTS
 Carat Weight **1.51 CARAT**
 Color Grade **J**
 Clarity Grade **VS 2**
 Cut Grade **VERY GOOD**



ADDITIONAL GRADING INFORMATION

Polish **EXCELLENT**
 Symmetry **EXCELLENT**
 Fluorescence **NONE**
 Inscription(s)



IGI

May 5, 2026
 IGI Report No
OVAL BRILLIANT
 8.86 X 6.25 X 4.07 MM
 Carat Weight **1.51 CARAT**
 Color Grade **J**
 Clarity Grade **VS 2**
 Cut Grade **VERY GOOD**
 Depth **66.1%**
 Table **61%**
 Girdle **Medium To Thick (Faceted)**
 Culet **Pointed**
 Polish **EXCELLENT**
 Symmetry **EXCELLENT**
 Fluorescence **NONE**
 Inscription(s)