



ELECTRONIC COPY

Report verification at igi.org

LABORATORY GROWN DIAMOND REPORT

April 28, 2025
IGI Report Number
Description LABORATORY GROWN DIAMOND
Shape and Cutting Style RECTANGULAR CUSHION MIXED CUT
Measurements 16.67 X 10.20 X 5.65 MM

GRADING RESULTS

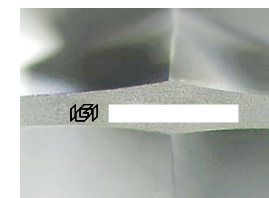
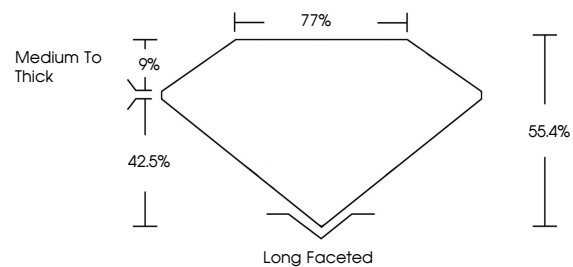
Carat Weight 10.02 CARATS
Color Grade FANCY INTENSE PINK
Clarity Grade SI 1

ADDITIONAL GRADING INFORMATION

Polish EXCELLENT
Symmetry EXCELLENT
Fluorescence SLIGHT
Inscription(s) IGI

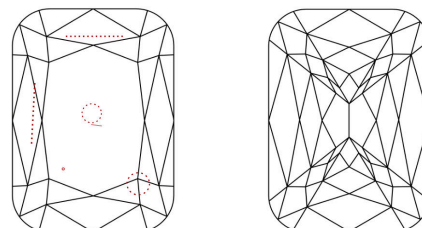
Comments: This Laboratory Grown Diamond was created by Chemical Vapor Deposition (CVD) growth process.
Indications of post-growth treatment.

PROPORTIONS



Sample Image Used

CLARITY CHARACTERISTICS



KEY TO SYMBOLS

Red symbols indicate internal characteristics.
Green symbols indicate external characteristics.

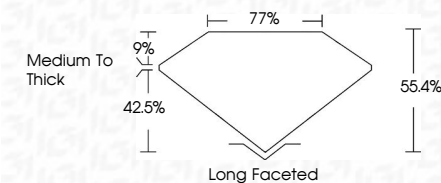
COLOR

D E F G H I J Faint Very Light Light

CLARITY

IF VS 1-2 VS 1-2 SI 1-2 I 1-3
Internally Flawless Very Very Slightly Included Very Slightly Included Slightly Included Included

April 28, 2025
IGI Report Number
Description LABORATORY GROWN DIAMOND
Shape and Cutting Style RECTANGULAR CUSHION MIXED CUT
Measurements 16.67 X 10.20 X 5.65 MM
GRADING RESULTS
Carat Weight 10.02 CARATS
Color Grade FANCY INTENSE PINK
Clarity Grade SI 1



ADDITIONAL GRADING INFORMATION

Polish EXCELLENT
Symmetry EXCELLENT
Fluorescence SLIGHT
Inscription(s) IGI
Comments: This Laboratory Grown Diamond was created by Chemical Vapor Deposition (CVD) growth process.
Indications of post-growth treatment.



Summary table of report details including date, report number, description, measurements, grading results, and additional information.

Comments: This Laboratory Grown Diamond was created by Chemical Vapor Deposition (CVD) growth process. Indications of post-growth treatment.