



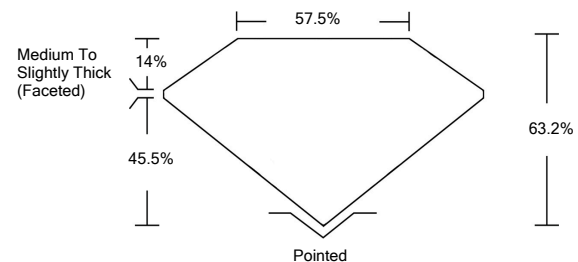
**ELECTRONIC COPY**

**LABORATORY GROWN DIAMOND REPORT**

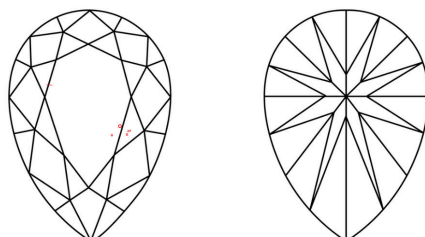
|                                       |                                     |
|---------------------------------------|-------------------------------------|
| January 26, 2022                      |                                     |
| IGI Report Number                     |                                     |
| Description                           | <b>LABORATORY GROWN<br/>DIAMOND</b> |
| Shape and Cutting Style               | <b>PEAR BRILLIANT</b>               |
| Measurements                          | <b>12.63 X 8.06 X 5.09 MM</b>       |
| <b>GRADING RESULTS</b>                |                                     |
| Carat Weight                          | <b>3.02 CARATS</b>                  |
| Color Grade                           | <b>I</b>                            |
| Clarity Grade                         | <b>VS 1</b>                         |
| <b>ADDITIONAL GRADING INFORMATION</b> |                                     |
| Polish                                | <b>EXCELLENT</b>                    |
| Symmetry                              | <b>EXCELLENT</b>                    |
| Fluorescence                          | <b>NONE</b>                         |
| Inscription(s)                        | <b>LABGROWN IGI</b>                 |

Comments: This Laboratory Grown Diamond was created by Chemical Vapor Deposition (CVD) growth process and may include post-growth treatment.  
Type IIa

**PROPORTIONS**



**CLARITY CHARACTERISTICS**

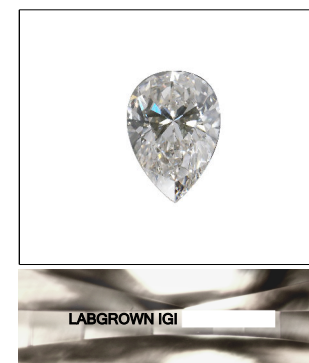


**KEY TO SYMBOLS**

Red symbols indicate internal characteristics.  
Green symbols indicate external characteristics.

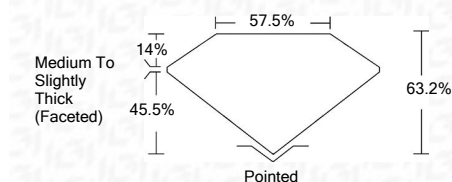
**GRADING SCALES**

|                                    |  |                                |  |                                    |                            |               |
|------------------------------------|--|--------------------------------|--|------------------------------------|----------------------------|---------------|
| <b>COLOR GRADING SCALE</b>         | CL<br>COLORLESS<br>D-F                   | NC<br>NEAR<br>COLORLESS<br>G-J | FT<br>FAINT<br>K-M                       | VLT<br>VERY LIGHT<br>N-R           | LT<br>LIGHT<br>S-Z         |               |
| <b>CLARITY (10x) GRADING SCALE</b> | FL<br>FLAWLESS<br>INTERNALLY<br>FLAWLESS | IF<br>INTERNAL<br>FLAWLESS     | VVS<br>VERY VERY<br>SLIGHTLY<br>INCLUDED | VS<br>VERY<br>SLIGHTLY<br>INCLUDED | SI<br>SLIGHTLY<br>INCLUDED | I<br>INCLUDED |



**LASERSCRIBE<sup>SM</sup>**  
Sample Image Used

|                         |                                     |
|-------------------------|-------------------------------------|
| January 26, 2022        |                                     |
| IGI Report Number       |                                     |
| Description             | <b>LABORATORY GROWN<br/>DIAMOND</b> |
| Shape and Cutting Style | <b>PEAR BRILLIANT</b>               |
| Measurements            | <b>12.63 X 8.06 X 5.09 MM</b>       |
| <b>GRADING RESULTS</b>  |                                     |
| Carat Weight            | <b>3.02 CARATS</b>                  |
| Color Grade             | <b>I</b>                            |
| Clarity Grade           | <b>VS 1</b>                         |



|                                       |                     |
|---------------------------------------|---------------------|
| <b>ADDITIONAL GRADING INFORMATION</b> |                     |
| Polish                                | <b>EXCELLENT</b>    |
| Symmetry                              | <b>EXCELLENT</b>    |
| Fluorescence                          | <b>NONE</b>         |
| Inscription(s)                        | <b>LABGROWN IGI</b> |

Comments: This Laboratory Grown Diamond was created by Chemical Vapor Deposition (CVD) growth process and may include post-growth treatment.  
Type IIa



|  |   |
|--|---|
| January 26, 2022   |   |
| IGI Report No  |   |
| PEAR BRILLIANT   |   |
| 12.63 X 8.06 X 5.09 MM   |   |
| Carat Weight   | <b>3.02 CARATS</b>                        |
| Color Grade  | <b>I</b>                                  |
| Clarity Grade  | <b>VS 1</b>                               |
| Depth  | <b>63.2%</b>                              |
| Table  | <b>45.5%</b>                              |
| Girdle   | <b>Medium To Slightly Thick (Faceted)</b> |
| Culet  | <b>Pointed</b>                            |
| Polish   | <b>EXCELLENT</b>                          |
| Symmetry   | <b>EXCELLENT</b>                          |
| Fluorescence   | <b>NONE</b>                               |
| Inscription(s)   | <b>LABGROWN IGI</b>                       |
| Comments:  |   |
| This Laboratory Grown Diamond was created by Chemical Vapor Deposition (CVD) growth process and may include post-growth treatment.<br>Type IIa |   |