



ELECTRONIC COPY

Report verification at igi.org

LABORATORY GROWN DIAMOND REPORT

April 13, 2026
IGI Report Number
Description LABORATORY GROWN DIAMOND
Shape and Cutting Style ROUND BRILLIANT
Measurements 7.46 - 7.49 X 4.51 MM

GRADING RESULTS

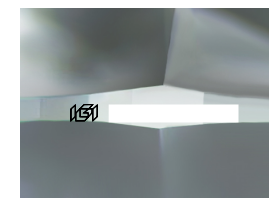
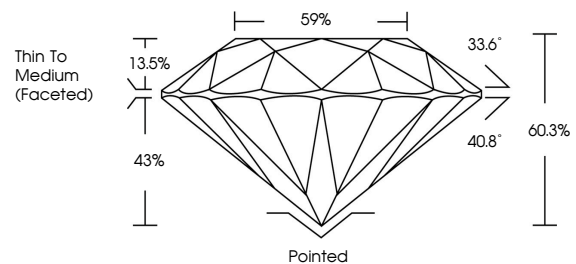
Carat Weight 1.55 CARAT
Color Grade G
Clarity Grade SI 1
Cut Grade IDEAL

ADDITIONAL GRADING INFORMATION

Polish EXCELLENT
Symmetry EXCELLENT
Fluorescence NONE
Inscription(s) IGI

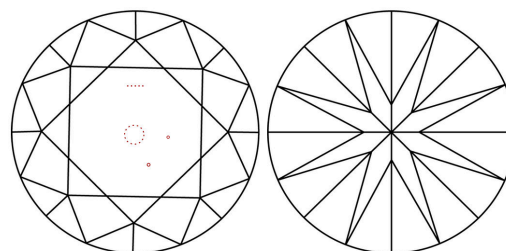
Comments: This Laboratory Grown Diamond was created by Chemical Vapor Deposition (CVD) growth process. Type IIa

PROPORTIONS



Sample Image Used

CLARITY CHARACTERISTICS



KEY TO SYMBOLS

Red symbols indicate internal characteristics.
Green symbols indicate external characteristics.

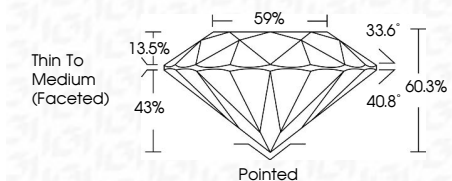
COLOR

D E F G H I J Faint Very Light Light

CLARITY

FL IF VS 1-2 VS 1-2 SI 1-2 I 1-3
Flawless Internally Flawless Very Very Slightly Included Very Slightly Included Slightly Included Included

April 13, 2026
IGI Report Number
Description LABORATORY GROWN DIAMOND
Shape and Cutting Style ROUND BRILLIANT
Measurements 7.46 - 7.49 X 4.51 MM
GRADING RESULTS
Carat Weight 1.55 CARAT
Color Grade G
Clarity Grade SI 1
Cut Grade IDEAL



ADDITIONAL GRADING INFORMATION

Polish EXCELLENT
Symmetry EXCELLENT
Fluorescence NONE
Inscription(s) IGI
Comments: This Laboratory Grown Diamond was created by Chemical Vapor Deposition (CVD) growth process. Type IIa



IGI



Summary table of report details: April 13, 2026, IGI Report No, ROUND BRILLIANT, 7.46 - 7.49 X 4.51 MM, 1.55 CARAT, G, SI 1, IDEAL, 60.3%, 59%, Thin To Medium (Faceted), Pointed, EXCELLENT, EXCELLENT, NONE, IGI, Comments: This Laboratory Grown Diamond was created by Chemical Vapor Deposition (CVD) growth process. Type IIa