



ELECTRONIC COPY

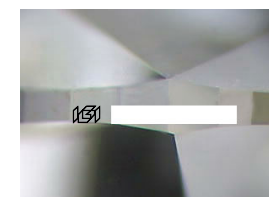
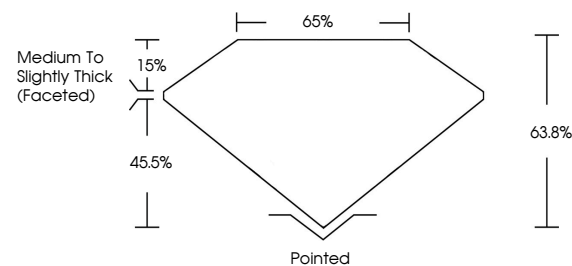
Report verification at igi.org



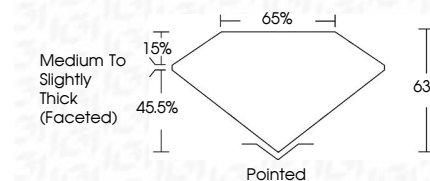
June 23, 2025
IGI Report Number
Description LABORATORY GROWN DIAMOND
Shape and Cutting Style OVAL MIXED CUT
Measurements 11.79 X 8.35 X 5.33 MM
GRADING RESULTS
Carat Weight 3.68 CARATS
Color Grade F
Clarity Grade VS 1

June 23, 2025
IGI Report Number
Description LABORATORY GROWN DIAMOND
Shape and Cutting Style OVAL MIXED CUT
Measurements 11.79 X 8.35 X 5.33 MM
GRADING RESULTS
Carat Weight 3.68 CARATS
Color Grade F
Clarity Grade VS 1

PROPORTIONS



Sample Image Used



ADDITIONAL GRADING INFORMATION

Polish EXCELLENT
Symmetry VERY GOOD
Fluorescence NONE
Inscription(s) IGI
Comments: This Laboratory Grown Diamond was created by Chemical Vapor Deposition (CVD) growth process. Type IIa

ADDITIONAL GRADING INFORMATION

Polish EXCELLENT
Symmetry VERY GOOD
Fluorescence NONE
Inscription(s) IGI
Comments: This Laboratory Grown Diamond was created by Chemical Vapor Deposition (CVD) growth process. Type IIa

COLOR

D E F G H I J Faint Very Light Light

CLARITY

IF VS 1-2 VS 1-2 SI 1-2 I 1-3
Internally Flawless Very Very Slightly Included Very Slightly Included Slightly Included Included



IGI



June 23, 2025
IGI Report No.
OVAL MIXED CUT
11.79 X 8.35 X 5.33 MM
3.68 CARATS
F
Color Grade
VS 1
Clarity Grade
63.8%
Depth
65%
Table
Medium to Slightly Thick (Faceted)
Girdle
Pointed
Culet
Polish EXCELLENT
Symmetry VERY GOOD
Fluorescence NONE
Inscription(s) IGI

Comments: This Laboratory Grown Diamond was created by Chemical Vapor Deposition (CVD) growth process. Type IIa