



Report verification at [igi.org](http://igi.org)

**ELECTRONIC COPY**

**DIAMOND REPORT**

November 27, 2025  
 IGI Report Number  
 Description **NATURAL DIAMOND**  
 Shape and Cutting Style **OVAL BRILLIANT**  
 Measurements **11.51 X 8.04 X 4.91 MM**

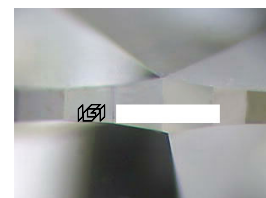
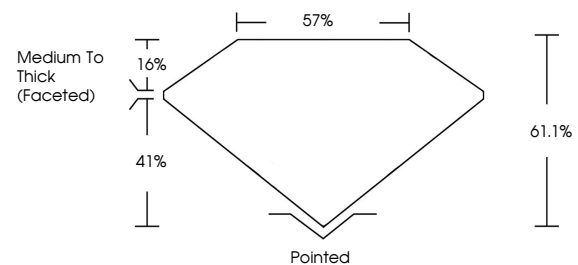
**GRADING RESULTS**

Carat Weight **3.01 CARATS**  
 Color Grade **J**  
 Clarity Grade **SI 2**  
 Cut Grade **VERY GOOD**

**ADDITIONAL GRADING INFORMATION**

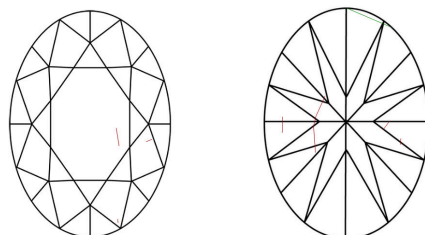
Polish **EXCELLENT**  
 Symmetry **EXCELLENT**  
 Fluorescence **VERY SLIGHT**  
 Inscription(s)

**PROPORTIONS**



Sample Image Used

**CLARITY CHARACTERISTICS**



**KEY TO SYMBOLS**

Red symbols indicate internal characteristics.  
 Green symbols indicate external characteristics.

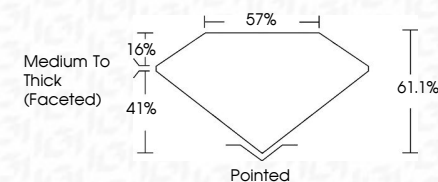
**COLOR**

D - F	G - J	K - M	N - R	S - Z	FANCY
Colorless	Near Colorless	Slightly Tinted	Very Light Color	Light Color	

**CLARITY**

FL	IF	VVS <sup>1-2</sup>	VS <sup>1-2</sup>	SI <sup>1-2</sup>	I <sup>1-3</sup>
Flawless	Internally Flawless	Very Very Slightly Included	Very Slightly Included	Slightly Included	Included

November 27, 2025  
 IGI Report Number  
 Description **NATURAL DIAMOND**  
 Shape and Cutting Style **OVAL BRILLIANT**  
 Measurements **11.51 X 8.04 X 4.91 MM**  
**GRADING RESULTS**  
 Carat Weight **3.01 CARATS**  
 Color Grade **J**  
 Clarity Grade **SI 2**  
 Cut Grade **VERY GOOD**



**ADDITIONAL GRADING INFORMATION**

Polish **EXCELLENT**  
 Symmetry **EXCELLENT**  
 Fluorescence **VERY SLIGHT**  
 Inscription(s)



**IGI**



November 27, 2025	3.01 CARATS	J	SI 2	61.1%	57%	Medium To Thick (Faceted)	Pointed	EXCELLENT	EXCELLENT	VERY SLIGHT	
IGI Report No	11.51 X 8.04 X 4.91 MM	Color Grade	Cut Grade	Depth	Table	Girdle	Culet	Polish	Symmetry	Fluorescence	Inscriptions(s)