



**ELECTRONIC COPY**

Report verification at [igi.org](http://igi.org)



October 28, 2025  
 IGI Report Number  
 Description **LABORATORY GROWN DIAMOND**  
 Shape and Cutting Style **OVAL MODIFIED BRILLIANT**  
 Measurements **7.36 X 5.28 X 3.35 MM**  
**GRADING RESULTS**  
 Carat Weight **1.04 CARAT**  
 Color Grade **FANCY INTENSE GREEN**  
 Clarity Grade **VVS 2**

October 28, 2025  
 IGI Report Number  
 Description **LABORATORY GROWN DIAMOND**  
 Shape and Cutting Style **OVAL MODIFIED BRILLIANT**  
 Measurements **7.36 X 5.28 X 3.35 MM**

**GRADING RESULTS**

Carat Weight **1.04 CARAT**  
 Color Grade **FANCY INTENSE GREEN**  
 Clarity Grade **VVS 2**

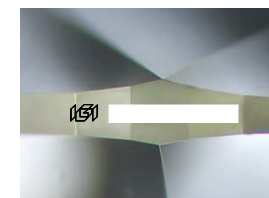
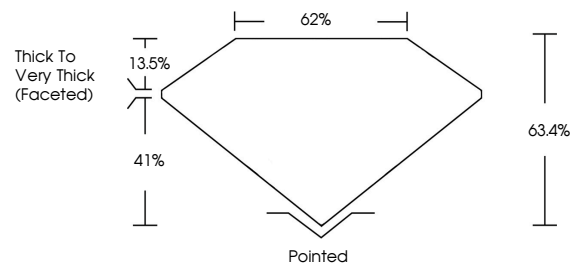
**ADDITIONAL GRADING INFORMATION**

Polish **VERY GOOD**  
 Symmetry **VERY GOOD**  
 Fluorescence **NONE**

Inscription(s)

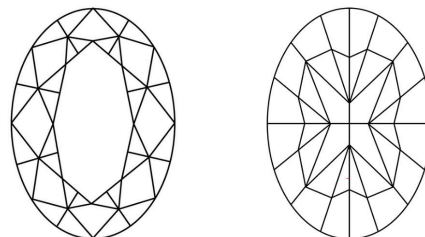
Comments: This Laboratory Grown Diamond was created by High Pressure High Temperature (HPHT) growth process. Indications of post-growth treatment.

**PROPORTIONS**



Sample Image Used

**CLARITY CHARACTERISTICS**



**KEY TO SYMBOLS**

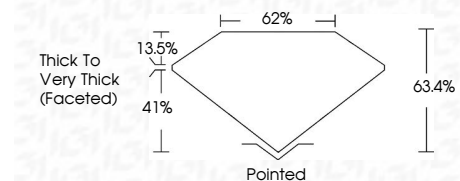
Red symbols indicate internal characteristics.  
 Green symbols indicate external characteristics.

**COLOR**

D E F G H I J Faint Very Light Light

**CLARITY**

FL	IF	VVS <sup>1-2</sup>	VS <sup>1-2</sup>	SI <sup>1-2</sup>	I <sup>1-3</sup>
Flawless	Internally Flawless	Very Very Slightly Included	Very Slightly Included	Slightly Included	Included



**ADDITIONAL GRADING INFORMATION**

Polish **VERY GOOD**  
 Symmetry **VERY GOOD**  
 Fluorescence **NONE**

Inscription(s)

Comments: This Laboratory Grown Diamond was created by High Pressure High Temperature (HPHT) growth process. Indications of post-growth treatment.



October 28, 2025  
 IGI Report No  
**OVAL MODIFIED BRILLIANT**  
 7.36 X 5.28 X 3.35 MM  
 1.04 CARAT  
 Carat Weight  
 Color Grade  
 Clarity Grade  
 Depth  
 Table  
 Girdle  
 Thick to Very Thick (Faceted)  
 Culet  
 Polish  
 Symmetry  
 Fluorescence  
 Inscription(s)

Comments: This Laboratory Grown Diamond was created by High Pressure High Temperature (HPHT) growth process. Indications of post-growth treatment.

