



**ELECTRONIC COPY**

Report verification at [igi.org](http://igi.org)

**LABORATORY GROWN DIAMOND REPORT**

October 18, 2024  
 IGI Report Number  
 Description **LABORATORY GROWN DIAMOND**  
 Shape and Cutting Style **OVAL BRILLIANT**  
 Measurements **12.61 X 8.92 X 5.50 MM**

**GRADING RESULTS**

Carat Weight **4.02 CARATS**  
 Color Grade **G**  
 Clarity Grade **VS 2**

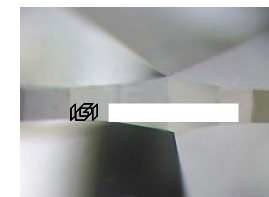
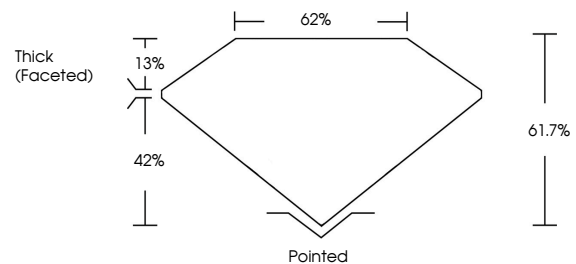
**ADDITIONAL GRADING INFORMATION**

Polish **VERY GOOD**  
 Symmetry **EXCELLENT**  
 Fluorescence **NONE**

Inscription(s)

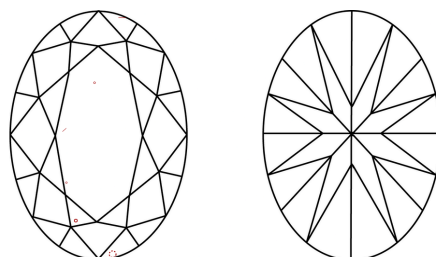
Comments: This Laboratory Grown Diamond was created by Chemical Vapor Deposition (CVD) growth process.  
 Type IIa

**PROPORTIONS**



Sample Image Used

**CLARITY CHARACTERISTICS**



**KEY TO SYMBOLS**

Red symbols indicate internal characteristics.  
 Green symbols indicate external characteristics.

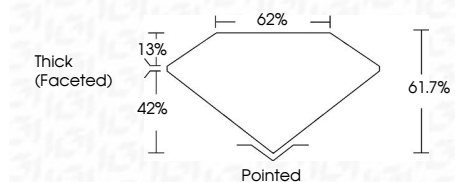
**COLOR**

D E F G H I J Faint Very Light Light

**CLARITY**

IF	VS <sup>1-2</sup>	VS <sup>1-2</sup>	SI <sup>1-2</sup>	I <sup>1-3</sup>
Internally Flawless	Very Very Slightly Included	Very Slightly Included	Slightly Included	Included

October 18, 2024  
 IGI Report Number  
 Description **LABORATORY GROWN DIAMOND**  
 Shape and Cutting Style **OVAL BRILLIANT**  
 Measurements **12.61 X 8.92 X 5.50 MM**  
**GRADING RESULTS**  
 Carat Weight **4.02 CARATS**  
 Color Grade **G**  
 Clarity Grade **VS 2**



**ADDITIONAL GRADING INFORMATION**

Polish **VERY GOOD**  
 Symmetry **EXCELLENT**  
 Fluorescence **NONE**

Inscription(s)   
 Comments: This Laboratory Grown Diamond was created by Chemical Vapor Deposition (CVD) growth process.  
 Type IIa



October 18, 2024  
 IGI Report No  
**OVAL BRILLIANT**  
 12.61 X 8.92 X 5.50 MM  
 Carat Weight  
 Color Grade **G**  
 Clarity Grade **VS 2**  
 Depth **61.7%**  
 Table **62%**  
 Girdle  
 Thick (Faceted)  
 Pointed  
 Culet  
 Polish **VERY GOOD**  
 Symmetry **EXCELLENT**  
 Fluorescence **NONE**  
 Inscription(s)

Comments: This Laboratory Grown Diamond was created by Chemical Vapor Deposition (CVD) growth process.  
 Type IIa