



ELECTRONIC COPY

Report verification at igi.org

DIAMOND REPORT

June 24, 2024
 IGI Report Number
 Description **NATURAL DIAMOND**
 Shape and Cutting Style **EMERALD CUT**
 Measurements **9.16 X 6.61 X 4.64 MM**

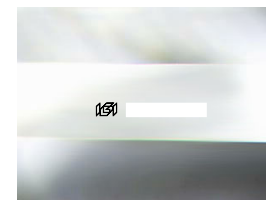
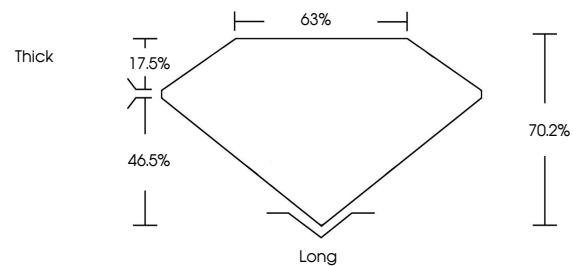
GRADING RESULTS

Carat Weight **3.00 CARATS**
 Color Grade **I**
 Clarity Grade **VVS 2**
 Cut Grade **VERY GOOD**

ADDITIONAL GRADING INFORMATION

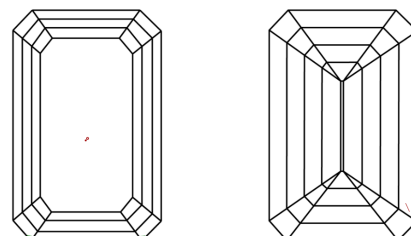
Polish **EXCELLENT**
 Symmetry **EXCELLENT**
 Fluorescence **NONE**
 Inscription(s)

PROPORTIONS



Sample Image Used

CLARITY CHARACTERISTICS



KEY TO SYMBOLS

Red symbols indicate internal characteristics.
 Green symbols indicate external characteristics.

COLOR

D - F	G - J	K - M	N - R	S - Z	FANCY
Colorless	Near Colorless	Slightly Tinted	Very Light Color	Light Color	

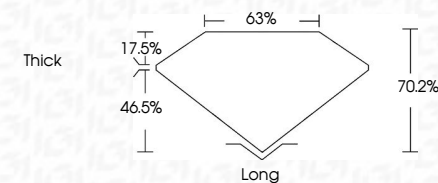
CLARITY

IF	VS ¹⁻²	VS ¹⁻²	SI ¹⁻²	I ¹⁻³
Internally Flawless	Very Very Slightly Included	Very Slightly Included	Slightly Included	Included

June 24, 2024
 IGI Report Number
 Description **NATURAL DIAMOND**
 Shape and Cutting Style **EMERALD CUT**
 Measurements **9.16 X 6.61 X 4.64 MM**

GRADING RESULTS

Carat Weight **3.00 CARATS**
 Color Grade **I**
 Clarity Grade **VVS 2**
 Cut Grade **VERY GOOD**



ADDITIONAL GRADING INFORMATION

Polish **EXCELLENT**
 Symmetry **EXCELLENT**
 Fluorescence **NONE**
 Inscription(s)



June 24, 2024
IGI Report No
EMERALD CUT

9.16 X 6.61 X 4.64 MM

3.00 CARATS
I
VVS 2
VERY GOOD
70.2%
68%
Thick
Long
EXCELLENT
EXCELLENT
NONE

June 24, 2024
IGI Report No
EMERALD CUT
9.16 X 6.61 X 4.64 MM
3.00 CARATS
I
VVS 2
VERY GOOD
70.2%
68%
Thick
Long
EXCELLENT
EXCELLENT
NONE