



LABORATORY GROWN DIAMOND REPORT

May 2, 2026
 IGI Report Number
 Description **LABORATORY GROWN DIAMOND**
 Shape and Cutting Style **ROUND BRILLIANT**
 Measurements **6.12 - 6.14 X 3.75 MM**

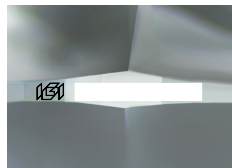
GRADING RESULTS

Carat Weight **0.85 CARAT**
 Color Grade **D**
 Clarity Grade **VVS 2**
 Cut Grade **IDEAL**

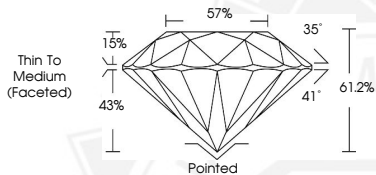
ADDITIONAL GRADING INFORMATION

Polish **EXCELLENT**
 Symmetry **EXCELLENT**
 Fluorescence **NONE**
 Inscription(s)

Comments: As Grown - No indication of post-growth treatment.
 This Laboratory Grown Diamond was created by High Pressure High
 Temperature (HPHT) growth process.
 Type II



Sample Image Used



May 2, 2026
 IGI Report Number
 ROUND BRILLIANT
 LABORATORY GROWN DIAMOND
 6.12 - 6.14 X 3.75 MM
 0.85 CARAT
 D
 VVS 2
 IDEAL
 EXCELLENT
 EXCELLENT
 NONE
 Comments: As Grown - No indication of post-growth treatment. This Laboratory Grown Diamond was created by High Pressure High Temperature (HPHT) growth process. Type II

May 2, 2026
 IGI Report Number
 ROUND BRILLIANT
 LABORATORY GROWN DIAMOND
 6.12 - 6.14 X 3.75 MM
 0.85 CARAT
 D
 VVS 2
 IDEAL
 EXCELLENT
 EXCELLENT
 NONE
 Comments: As Grown - No indication of post-growth treatment. This Laboratory Grown Diamond was created by High Pressure High Temperature (HPHT) growth process. Type II

THIS DOCUMENT WAS PRODUCED WITH THE FOLLOWING SECURITY MEASURES: SPECIAL DOCUMENT PAPER, INK SCREENS, WATERMARK, BACKGROUND DESIGNS, HOLOGRAM AND OTHER SECURITY FEATURES NOT LISTED AND DO EXCEED DOCUMENT SECURITY INDUSTRY GUIDELINES.