



ELECTRONIC COPY

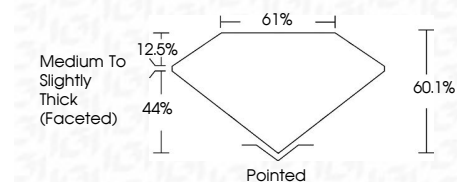
Report verification at igi.org



April 10, 2026
IGI Report Number
Description LABORATORY GROWN DIAMOND

Shape and Cutting Style OVAL BRILLIANT
Measurements 15.24 X 9.49 X 5.70 MM

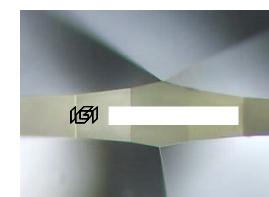
GRADING RESULTS
Carat Weight 5.54 CARATS
Color Grade G
Clarity Grade VVS 2



ADDITIONAL GRADING INFORMATION
Polish EXCELLENT
Symmetry EXCELLENT
Fluorescence NONE
Inscription(s) IGI
Comments: This Laboratory Grown Diamond was created by Chemical Vapor Deposition (CVD) growth process. Type IIa

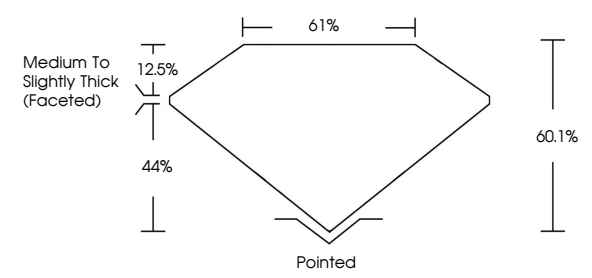


April 10, 2026
IGI Report No. OVAL BRILLIANT
15.24 X 9.49 X 5.70 MM
5.54 CARATS
Color Grade G
Clarity Grade VVS 2
Table 60.1%
Depth 44%
Girdle Medium to Slightly Thick (Faceted)
Culet Pointed
Polish EXCELLENT
Symmetry EXCELLENT
Fluorescence NONE
Inscription(s) IGI
Comments: This Laboratory Grown Diamond was created by Chemical Vapor Deposition (CVD) growth process. Type IIa

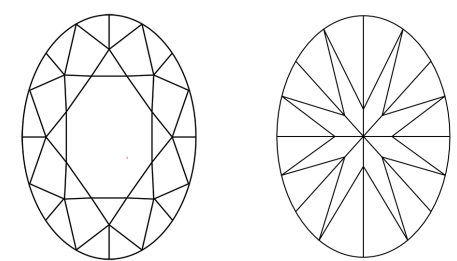


Sample Image Used

PROPORTIONS



CLARITY CHARACTERISTICS



KEY TO SYMBOLS
Red symbols indicate internal characteristics.
Green symbols indicate external characteristics.

COLOR

Table with color grades: D, E, F, G, H, I, J, Faint, Very Light, Light

CLARITY

Table with clarity grades: FL, IF, VVS 1-2, VS 1-2, SI 1-2, I 1-3, Flawless, Internally Flawless, Very Very Slightly Included, Very Slightly Included, Slightly Included, Included

