



Report verification at igi.org

ELECTRONIC COPY

LABORATORY GROWN DIAMOND REPORT

May 24, 2024
 IGI Report Number
 Description **LABORATORY GROWN DIAMOND**
 Shape and Cutting Style **MARQUISE MODIFIED BRILLIANT**
 Measurements **11.29 X 5.82 X 3.43 MM**

GRADING RESULTS

Carat Weight **1.43 CARAT**
 Color Grade **FANCY INTENSE BLUE**
 Clarity Grade **VS 1**

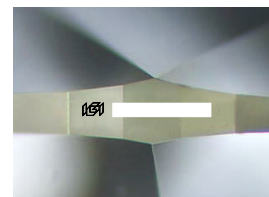
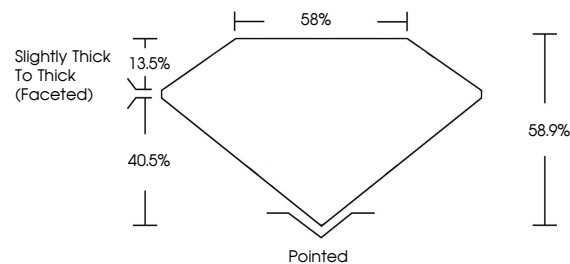
ADDITIONAL GRADING INFORMATION

Polish **VERY GOOD**
 Symmetry **VERY GOOD**
 Fluorescence **NONE**

Inscription(s)

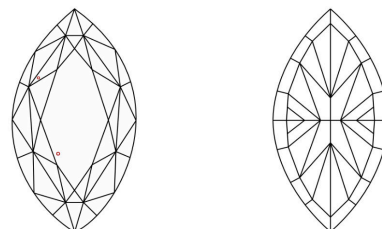
Comments: This Laboratory Grown Diamond was created by Chemical Vapor Deposition (CVD) growth process.
 Indications of post-growth treatment.

PROPORTIONS



Sample Image Used

CLARITY CHARACTERISTICS



KEY TO SYMBOLS

Red symbols indicate internal characteristics.
 Green symbols indicate external characteristics.

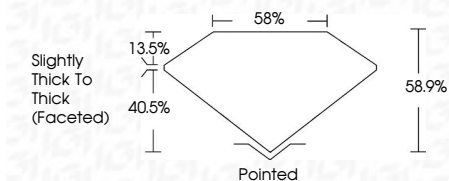
COLOR

D E F G H I J Faint Very Light Light

CLARITY

IF	VS ¹⁻²	VS ¹⁻²	SI ¹⁻²	I ¹⁻³
Internally Flawless	Very Very Slightly Included	Very Slightly Included	Slightly Included	Included

May 24, 2024
 IGI Report Number
 Description **LABORATORY GROWN DIAMOND**
 Shape and Cutting Style **MARQUISE MODIFIED BRILLIANT**
 Measurements **11.29 X 5.82 X 3.43 MM**
GRADING RESULTS
 Carat Weight **1.43 CARAT**
 Color Grade **FANCY INTENSE BLUE**
 Clarity Grade **VS 1**



ADDITIONAL GRADING INFORMATION

Polish **VERY GOOD**
 Symmetry **VERY GOOD**
 Fluorescence **NONE**

Inscription(s)
 Comments: This Laboratory Grown Diamond was created by Chemical Vapor Deposition (CVD) growth process.
 Indications of post-growth treatment.



IGI



May 24, 2024
 IGI Report No
MARQUISE MODIFIED BRILLIANT
 11.29 X 5.82 X 3.43 MM
 1.43 CARAT
 Carat Weight
 Color Grade
FANCY INTENSE BLUE
 Clarity Grade
VS 1
 Depth
58.9%
 Table
40.5%
 Girdle
 Slightly Thick To Thick (Faceted)
 Culet
 Pointed
 Polish
VERY GOOD
 Symmetry
VERY GOOD
 Fluorescence
NONE
 Inscription(s)

Comments: This Laboratory Grown Diamond was created by Chemical Vapor Deposition (CVD) growth process.
 Indications of post-growth treatment.