



ELECTRONIC COPY

Report verification at igi.org

LABORATORY GROWN DIAMOND REPORT

October 29, 2025
 IGI Report Number
 Description **LABORATORY GROWN DIAMOND**
 Shape and Cutting Style **MODIFIED RECTANGULAR
CUSHION STEP CUT**
 Measurements **10.39 X 7.69 X 4.96 MM**

GRADING RESULTS

Carat Weight **3.52 CARATS**
 Color Grade **FANCY VIVID BLUE**
 Clarity Grade **VVS 2**

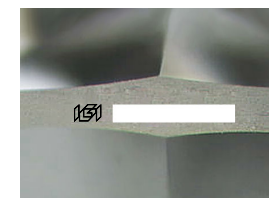
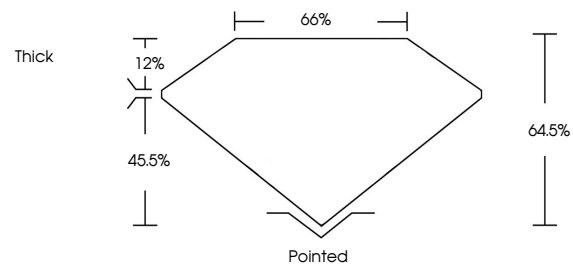
ADDITIONAL GRADING INFORMATION

Polish **EXCELLENT**
 Symmetry **EXCELLENT**
 Fluorescence **NONE**

Inscription(s)

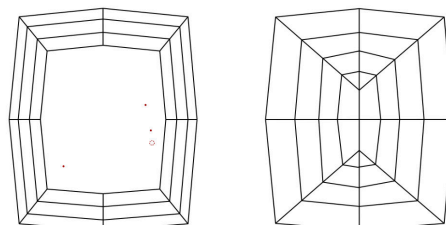
Comments: This Laboratory Grown Diamond was created by Chemical Vapor Deposition (CVD) growth process. Indications of post-growth treatment.

PROPORTIONS



Sample Image Used

CLARITY CHARACTERISTICS



KEY TO SYMBOLS

Red symbols indicate internal characteristics.
 Green symbols indicate external characteristics.

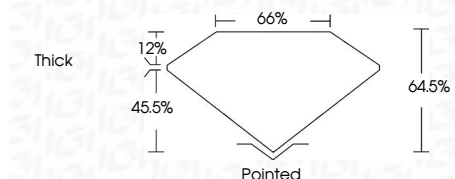
COLOR

D E F G H I J Faint Very Light Light

CLARITY

FL	IF	VVS ¹⁻²	VS ¹⁻²	SI ¹⁻²	I ¹⁻³
Flawless	Internally Flawless	Very Very Slightly Included	Very Slightly Included	Slightly Included	Included

October 29, 2025
 IGI Report Number
 Description **LABORATORY GROWN DIAMOND**
 Shape and Cutting Style **MODIFIED RECTANGULAR
CUSHION STEP CUT**
 Measurements **10.39 X 7.69 X 4.96 MM**
GRADING RESULTS
 Carat Weight **3.52 CARATS**
 Color Grade **FANCY VIVID BLUE**
 Clarity Grade **VVS 2**



ADDITIONAL GRADING INFORMATION

Polish **EXCELLENT**
 Symmetry **EXCELLENT**
 Fluorescence **NONE**

Inscription(s)
 Comments: This Laboratory Grown Diamond was created by Chemical Vapor Deposition (CVD) growth process. Indications of post-growth treatment.



October 29, 2025	IGI Report No	10.39 X 7.69 X 4.96 MM	3.52 CARATS	FANCY VIVID BLUE	VVS 2	64.5%	65%	Thick	Pointed	Polish	EXCELLENT	EXCELLENT	NONE	Inscription(s)	
	IGI Report No	10.39 X 7.69 X 4.96 MM	3.52 CARATS	FANCY VIVID BLUE	VVS 2	64.5%	65%	Thick	Pointed	Polish	EXCELLENT	EXCELLENT	NONE	Inscription(s)	

Comments: This Laboratory Grown Diamond was created by Chemical Vapor Deposition (CVD) growth process. Indications of post-growth treatment.