



# INTERNATIONAL GEMOLOGICAL INSTITUTE

## LABORATORY GROWN DIAMOND REPORT

April 9, 2025

IGI Report Number

Description

Shape and Cutting Style

Measurements

**LABORATORY GROWN DIAMOND**

**OVAL BRILLIANT**

**4.69 X 3.41 X 2.07 MM**

### GRADING RESULTS

Carat Weight

Color Grade

Clarity Grade

**0.22 CARAT**

**D**

**VS 1**

### ADDITIONAL GRADING INFORMATION

Polish

Symmetry

Fluorescence

Inscription(s)

**GOOD**

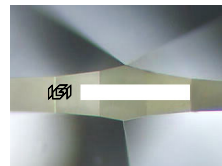
**VERY GOOD**

**NONE**

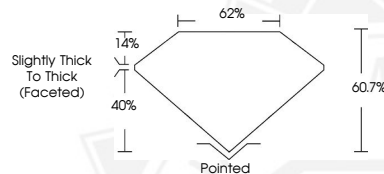


Comments: As Grown - No indication of post-growth treatment. This Laboratory Grown Diamond was created by High Pressure High Temperature (HPHT) growth process. Type II

ELECTRONIC COPY



Sample Image Used



April 9, 2025

IGI Report Number

OVAL BRILLIANT

LABORATORY GROWN DIAMOND

4.69 X 3.41 X 2.07 MM

Carat Weight **0.22 CARAT**

Color Grade **D**

Clarity Grade **VS 1**

Polish **GOOD**

Symmetry **VERY GOOD**

Fluorescence **NONE**

Inscription(s)

Comments: As Grown - No indication of post-growth treatment. This Laboratory Grown Diamond was created by High Pressure High Temperature (HPHT) growth process. Type II



April 9, 2025

IGI Report Number

OVAL BRILLIANT

LABORATORY GROWN DIAMOND

4.69 X 3.41 X 2.07 MM

Carat Weight **0.22 CARAT**

Color Grade **D**

Clarity Grade **VS 1**

Polish **GOOD**

Symmetry **VERY GOOD**

Fluorescence **NONE**

Inscription(s)

Comments: As Grown - No indication of post-growth treatment. This Laboratory Grown Diamond was created by High Pressure High Temperature (HPHT) growth process. Type II



THIS DOCUMENT WAS PRODUCED WITH THE FOLLOWING SECURITY MEASURES: SPECIAL DOCUMENT PAPER, INK SCREENS, WATERMARK, BACKGROUND DESIGNS, HOLOGRAM AND OTHER SECURITY FEATURES NOT LISTED AND DO EXCEED DOCUMENT SECURITY INDUSTRY GUIDELINES.

For terms & conditions and to verify this report, please visit [www.igi.org](http://www.igi.org)