



ELECTRONIC COPY

Report verification at igi.org



October 27, 2024
 IGI Report Number
 Description **LABORATORY GROWN DIAMOND**
 Shape and Cutting Style **CUSHION BRILLIANT**
 Measurements **8.55 X 6.84 X 4.60 MM**
GRADING RESULTS
 Carat Weight **2.08 CARATS**
 Color Grade **D**
 Clarity Grade **VVS 1**

LABORATORY GROWN DIAMOND REPORT

October 27, 2024
 IGI Report Number
 Description **LABORATORY GROWN DIAMOND**
 Shape and Cutting Style **CUSHION BRILLIANT**
 Measurements **8.55 X 6.84 X 4.60 MM**

GRADING RESULTS

Carat Weight **2.08 CARATS**
 Color Grade **D**
 Clarity Grade **VVS 1**

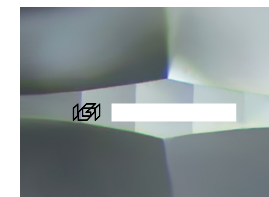
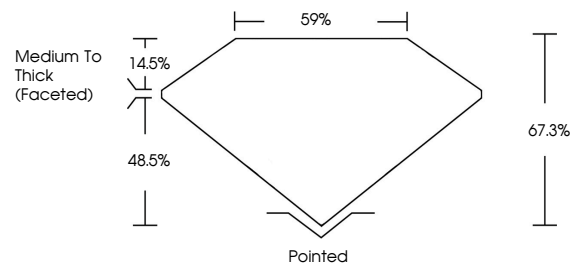
ADDITIONAL GRADING INFORMATION

Polish **EXCELLENT**
 Symmetry **EXCELLENT**
 Fluorescence **NONE**

Inscription(s)

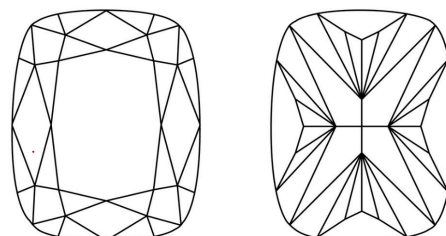
Comments: As Grown - No indication of post-growth treatment.
 This Laboratory Grown Diamond was created by High Pressure High Temperature (HPHT) growth process. Type II

PROPORTIONS



Sample Image Used

CLARITY CHARACTERISTICS



KEY TO SYMBOLS

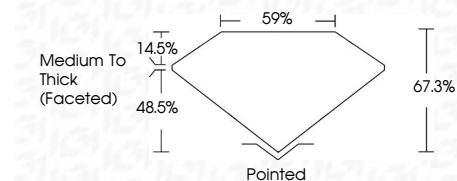
Red symbols indicate internal characteristics.
 Green symbols indicate external characteristics.

COLOR

D E F G H I J Faint Very Light Light

CLARITY

IF	VS ¹⁻²	VS ¹⁻²	SI ¹⁻²	I ¹⁻³
Internally Flawless	Very Very Slightly Included	Very Slightly Included	Slightly Included	Included



ADDITIONAL GRADING INFORMATION

Polish **EXCELLENT**
 Symmetry **EXCELLENT**
 Fluorescence **NONE**

Inscription(s)
 Comments: As Grown - No indication of post-growth treatment.
 This Laboratory Grown Diamond was created by High Pressure High Temperature (HPHT) growth process. Type II



October 27, 2024
 IGI Report No
CUSHION BRILLIANT
 8.55 X 6.84 X 4.60 MM
 Carat Weight
 Color Grade
 Clarity Grade
 Depth
 Table
 Girdle
 Culet
 Polish
 Symmetry
 Fluorescence
 Inscription(s)
2.08 CARATS
D
VVS 1
67.0%
67%
Medium To Thick (Faceted)
Pointed
EXCELLENT
EXCELLENT
NONE

Comments: As Grown - No indication of post-growth treatment.
 This Laboratory Grown Diamond was created by High Pressure High Temperature (HPHT) growth process. Type II