



ELECTRONIC COPY

LABORATORY GROWN DIAMOND REPORT

January 29, 2024
 IGI Report Number
 Description **LABORATORY GROWN
DIAMOND**
 Shape and Cutting Style **HEXAGONAL MIXED CUT**
 Measurements **9.88 X 6.83 X 4.28 MM**

GRADING RESULTS

Carat Weight **2.08 CARATS**
 Color Grade **G**
 Clarity Grade **VS 1**

ADDITIONAL GRADING INFORMATION

Polish **EXCELLENT**
 Symmetry **EXCELLENT**
 Fluorescence **NONE**

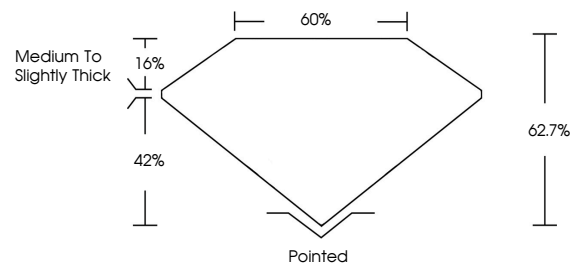
Inscription(s)

Comments: This Laboratory Grown Diamond was created by Chemical Vapor Deposition (CVD) growth process and may include post-growth treatment. Type IIa

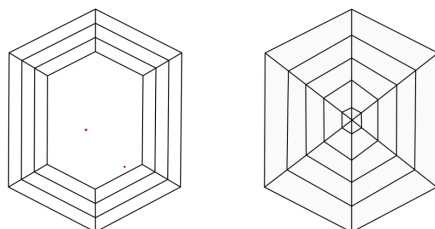
LABORATORY GROWN DIAMOND REPORT

Report verification at igi.org

PROPORTIONS



CLARITY CHARACTERISTICS



KEY TO SYMBOLS

Red symbols indicate internal characteristics.
 Green symbols indicate external characteristics.

**LABORATORY GROWN
DIAMOND REPORT**

LABORATORY GROWN DIAMOND REPORT

January 29, 2024
 IGI Report Number
 Description **LABORATORY GROWN
DIAMOND**
 Shape and Cutting Style **HEXAGONAL MIXED CUT**
 Measurements **9.88 X 6.83 X 4.28 MM**
GRADING RESULTS
 Carat Weight **2.08 CARATS**
 Color Grade **G**
 Clarity Grade **VS 1**

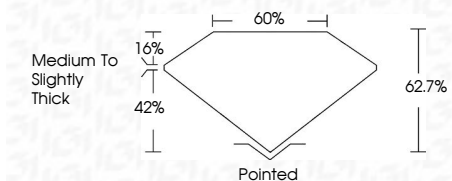
GRADING SCALES

CLARITY

IF	VVS ¹⁻²	VS ¹⁻²	SI ¹⁻²	I ¹⁻³
Internally Flawless	Very Very Slightly Included	Very Slightly Included	Slightly Included	Included

COLOR

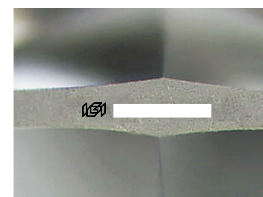
D	E	F	G	H	I	J	Faint	Very Light	Light
---	---	---	---	---	---	---	-------	------------	-------



ADDITIONAL GRADING INFORMATION

Polish **EXCELLENT**
 Symmetry **EXCELLENT**
 Fluorescence **NONE**

Inscription(s)
 Comments: This Laboratory Grown Diamond was created by Chemical Vapor Deposition (CVD) growth process and may include post-growth treatment. Type IIa



Sample Image Used



January 29, 2024
 IGI Report No
HEXAGONAL MIXED CUT
 9.88 X 6.83 X 4.28 MM
 Carat Weight **2.08 CARATS**
 Color Grade **G**
 Clarity Grade **VS 1**
 Depth **62.7%**
 Table **60%**
 Girdle **Medium to Slightly Thick**
 Culet **Pointed**
 Polish **EXCELLENT**
 Symmetry **EXCELLENT**
 Fluorescence **NONE**
 Inscription(s)

Comments: This Laboratory Grown Diamond was created by Chemical Vapor Deposition (CVD) growth process and may include post-growth treatment. Type IIa