



ELECTRONIC COPY

Report verification at igi.org

LABORATORY GROWN DIAMOND REPORT

August 13, 2025
 IGI Report Number
 Description **LABORATORY GROWN DIAMOND**
 Shape and Cutting Style **OCTAGONAL STEP CUT**
 Measurements **11.30 X 8.83 X 5.41 MM**
GRADING RESULTS
 Carat Weight **4.35 CARATS**
 Color Grade **E**
 Clarity Grade **VVS 2**

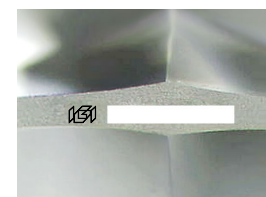
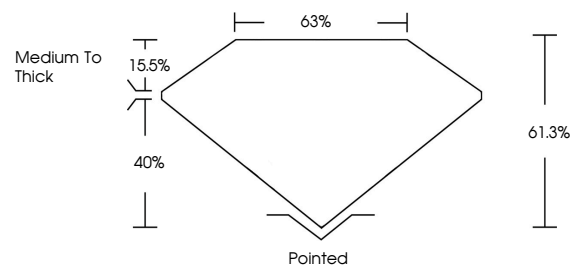
ADDITIONAL GRADING INFORMATION

Polish **EXCELLENT**
 Symmetry **EXCELLENT**
 Fluorescence **NONE**

Inscription(s)

Comments: This Laboratory Grown Diamond was created by Chemical Vapor Deposition (CVD) growth process.
 Type IIa

PROPORTIONS



Sample Image Used

COLOR

D E F G H I J Faint Very Light Light

CLARITY

| IF | VS ¹⁻² | VS ¹⁻² | SI ¹⁻² | I ¹⁻³ |
|---------------------|-----------------------------|------------------------|-------------------|------------------|
| Internally Flawless | Very Very Slightly Included | Very Slightly Included | Slightly Included | Included |

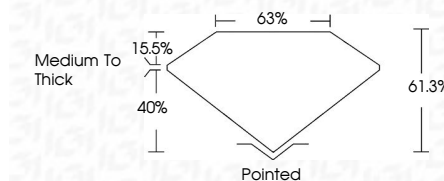
August 13, 2025
 IGI Report Number
 Description **LABORATORY GROWN DIAMOND**
 Shape and Cutting Style **OCTAGONAL STEP CUT**
 Measurements **11.30 X 8.83 X 5.41 MM**
GRADING RESULTS
 Carat Weight **4.35 CARATS**
 Color Grade **E**
 Clarity Grade **VVS 2**

ADDITIONAL GRADING INFORMATION

Polish **EXCELLENT**
 Symmetry **EXCELLENT**
 Fluorescence **NONE**

Inscription(s)

Comments: This Laboratory Grown Diamond was created by Chemical Vapor Deposition (CVD) growth process.
 Type IIa



August 13, 2025
 IGI Report No
OCTAGONAL STEP CUT
 11.30 X 8.83 X 5.41 MM
4.35 CARATS
 E
 VS 2
 61.3%
 63%
 Medium to Thick
 Pointed
 EXCELLENT
 EXCELLENT
 NONE

 Comments: This Laboratory Grown Diamond was created by Chemical Vapor Deposition (CVD) growth process.
 Type IIa