



**LABORATORY GROWN DIAMOND REPORT**

October 10, 2025

IGI Report Number

Description

**LABORATORY GROWN DIAMOND**

Shape and Cutting Style

**PEAR BRILLIANT**

Measurements

**6.57 X 4.49 X 2.86 MM**

**GRADING RESULTS**

Carat Weight

**0.52 CARAT**

Color Grade

**D**

Clarity Grade

**VS 1**

**ADDITIONAL GRADING INFORMATION**

Polish

**VERY GOOD**

Symmetry

**VERY GOOD**

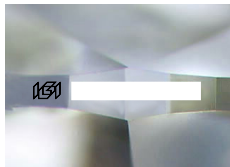
Fluorescence

**NONE**

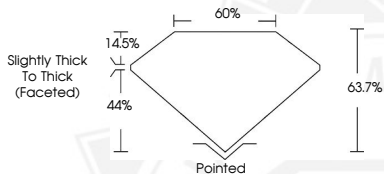
Inscription(s)



Comments: As Grown - No indication of post-growth treatment. This Laboratory Grown Diamond was created by High Pressure High Temperature (HPHT) growth process. Type II



Sample Image Used



October 10, 2025

IGI Report Number

**PEAR BRILLIANT**

**LABORATORY GROWN DIAMOND**

**6.57 X 4.49 X 2.86 MM**

Carat Weight

**0.52 CARAT**

Color Grade

**D**

Clarity Grade

**VS 1**

Polish

**VERY GOOD**

Symmetry

**VERY GOOD**

Fluorescence

**NONE**

Comments: As Grown - No indication of post-growth treatment. This Laboratory Grown Diamond was created by High Pressure High Temperature (HPHT) growth process. Type II

October 10, 2025

IGI Report Number

**PEAR BRILLIANT**

**LABORATORY GROWN DIAMOND**

**6.57 X 4.49 X 2.86 MM**

Carat Weight

**0.52 CARAT**

Color Grade

**D**

Clarity Grade

**VS 1**

Polish

**VERY GOOD**

Symmetry

**VERY GOOD**

Fluorescence

**NONE**

Inscription(s)



Comments: As Grown - No indication of post-growth treatment. This Laboratory Grown Diamond was created by High Pressure High Temperature (HPHT) growth process. Type II



THIS DOCUMENT WAS PRODUCED WITH THE FOLLOWING SECURITY MEASURES: SPECIAL DOCUMENT PAPER, INK SCREENS, WATERMARK, BACKGROUND DESIGNS, HOLOGRAM AND OTHER SECURITY FEATURES NOT LISTED AND DO EXCEED DOCUMENT SECURITY INDUSTRY GUIDELINES.