



**LABORATORY GROWN DIAMOND REPORT**

December 12, 2025

IGI Report Number

Description

**LABORATORY GROWN DIAMOND**

Shape and Cutting Style

**OVAL BRILLIANT**

Measurements

**7.35 X 4.96 X 3.13 MM**

**GRADING RESULTS**

Carat Weight

**0.73 CARAT**

Color Grade

**D**

Clarity Grade

**VS 1**

**ADDITIONAL GRADING INFORMATION**

Polish

**VERY GOOD**

Symmetry

**GOOD**

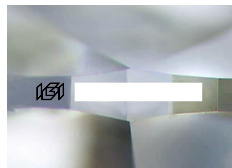
Fluorescence

**NONE**

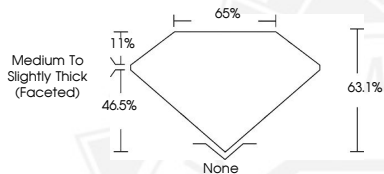
Inscription(s)



Comments: As Grown - No indication of post-growth treatment. This Laboratory Grown Diamond was created by High Pressure High Temperature (HPHT) growth process. Type II



Sample Image Used



December 12, 2025

IGI Report Number

**OVAL BRILLIANT**

**LABORATORY GROWN DIAMOND**

**7.35 X 4.96 X 3.13 MM**

Carat Weight

**0.73 CARAT**

Color Grade

**D**

Clarity Grade

**VS 1**

Polish

**VERY GOOD**

Symmetry

**GOOD**

Fluorescence

**NONE**

Inscription(s)



Comments: As Grown - No indication of post-growth treatment. This Laboratory Grown Diamond was created by High Pressure High Temperature (HPHT) growth process. Type II

December 12, 2025

IGI Report Number

**OVAL BRILLIANT**

**LABORATORY GROWN DIAMOND**

**7.35 X 4.96 X 3.13 MM**

Carat Weight

**0.73 CARAT**

Color Grade

**D**

Clarity Grade

**VS 1**

Polish

**VERY GOOD**

Symmetry

**GOOD**

Fluorescence

**NONE**

Inscription(s)



Comments: As Grown - No indication of post-growth treatment. This Laboratory Grown Diamond was created by High Pressure High Temperature (HPHT) growth process. Type II



THIS DOCUMENT WAS PRODUCED WITH THE FOLLOWING SECURITY MEASURES: SPECIAL DOCUMENT PAPER, INK SCREENS, WATERMARK, BACKGROUND DESIGNS, HOLOGRAM AND OTHER SECURITY FEATURES NOT LISTED AND DO EXCEED DOCUMENT SECURITY INDUSTRY GUIDELINES.