



ELECTRONIC COPY

Report verification at igi.org

DIAMOND REPORT

February 23, 2026  
 IGI Report Number  
 Description **NATURAL DIAMOND**  
 Shape and Cutting Style **OVAL BRILLIANT**  
 Measurements **8.87 X 5.65 X 3.58 MM**

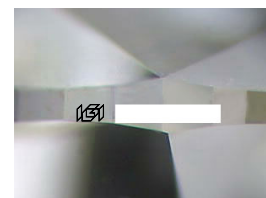
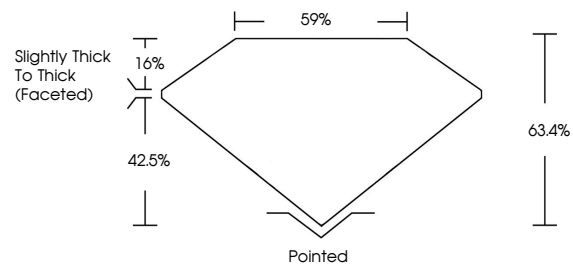
GRADING RESULTS

Carat Weight **1.20 CARAT**  
 Color Grade **L**  
 Clarity Grade **VS 1**  
 Cut Grade **VERY GOOD**

ADDITIONAL GRADING INFORMATION

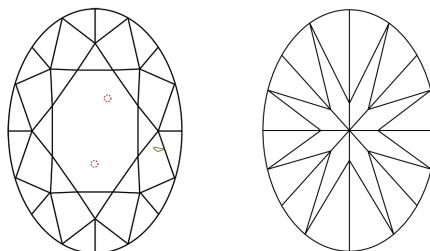
Polish **EXCELLENT**  
 Symmetry **EXCELLENT**  
 Fluorescence **NONE**  
 Inscription(s)

PROPORTIONS



Sample Image Used

CLARITY CHARACTERISTICS



KEY TO SYMBOLS

Red symbols indicate internal characteristics.  
 Green symbols indicate external characteristics.

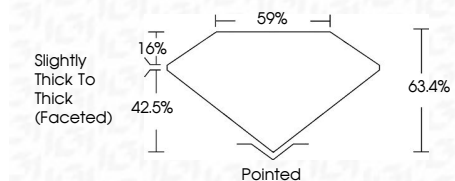
COLOR

D - F	G - J	K - M	N - R	S - Z	FANCY
Colorless	Near Colorless	Slightly Tinted	Very Light Color	Light Color	

CLARITY

FL	IF	VVS <sup>1-2</sup>	VS <sup>1-2</sup>	SI <sup>1-2</sup>	I <sup>1-3</sup>
Flawless	Internally Flawless	Very Very Slightly Included	Very Slightly Included	Slightly Included	Included

February 23, 2026  
 IGI Report Number  
 Description **NATURAL DIAMOND**  
 Shape and Cutting Style **OVAL BRILLIANT**  
 Measurements **8.87 X 5.65 X 3.58 MM**  
**GRADING RESULTS**  
 Carat Weight **1.20 CARAT**  
 Color Grade **L**  
 Clarity Grade **VS 1**  
 Cut Grade **VERY GOOD**



ADDITIONAL GRADING INFORMATION

Polish **EXCELLENT**  
 Symmetry **EXCELLENT**  
 Fluorescence **NONE**  
 Inscription(s)



IGI



February 23, 2026  
 IGI Report No  
**OVAL BRILLIANT**  
 8.87 X 5.65 X 3.58 MM  
 Carat Weight **1.20 CARAT**  
 Color Grade **L**  
 Clarity Grade **VS 1**  
 Cut Grade **VERY GOOD**  
 Depth **63.4%**  
 Table **1.6%**  
 Girdle **59%**  
 Slightly Thick To Thick (Faceted)  
 Culet **Pointed**  
 Polish **EXCELLENT**  
 Symmetry **EXCELLENT**  
 Fluorescence **NONE**  
 Inscription(s)