



LABORATORY GROWN DIAMOND REPORT

May 13, 2026
 IGI Report Number
 Description **LABORATORY GROWN DIAMOND**
 Shape and Cutting Style **PEAR BRILLIANT**
 Measurements **7.41 X 4.42 X 2.67 MM**

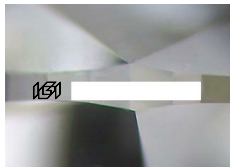
GRADING RESULTS

Carat Weight **0.50 CARAT**
 Color Grade **F**
 Clarity Grade **VVS 2**

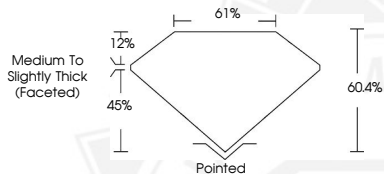
ADDITIONAL GRADING INFORMATION


Polish **VERY GOOD**
 Symmetry **VERY GOOD**
 Fluorescence **NONE**

Inscription(s) 
 Comments: This Laboratory Grown Diamond was created by
 Chemical Vapor Deposition (CVD) growth process.
 Type IIa



Sample Image Used



May 13, 2026
 IGI Report Number
PEAR BRILLIANT
LABORATORY GROWN DIAMOND
7.41 X 4.42 X 2.67 MM
 Carat Weight **0.50 CARAT**
 Color Grade **F**
 Clarity Grade **VVS 2**
 Polish **VERY GOOD**
 Symmetry **VERY GOOD**
 Fluorescence **NONE**
 Inscription(s) 
 Comments: This Laboratory Grown
 Diamond was created by
 Chemical Vapor Deposition (CVD)
 growth process. Type IIa



May 13, 2026
 IGI Report Number
PEAR BRILLIANT
LABORATORY GROWN DIAMOND
7.41 X 4.42 X 2.67 MM
 Carat Weight **0.50 CARAT**
 Color Grade **F**
 Clarity Grade **VVS 2**
 Polish **VERY GOOD**
 Symmetry **VERY GOOD**
 Fluorescence **NONE**
 Inscription(s) 
 Comments: This Laboratory Grown
 Diamond was created by
 Chemical Vapor Deposition (CVD)
 growth process. Type IIa



THIS DOCUMENT WAS PRODUCED WITH THE FOLLOWING SECURITY MEASURES: SPECIAL DOCUMENT PAPER, INK SCREENS, WATERMARK, BACKGROUND DESIGNS, HOLOGRAM AND OTHER SECURITY FEATURES NOT LISTED AND DO EXCEED DOCUMENT SECURITY INDUSTRY GUIDELINES.