



ELECTRONIC COPY

Report verification at igi.org

LABORATORY GROWN DIAMOND REPORT

July 8, 2025  
 IGI Report Number  
 Description **LABORATORY GROWN DIAMOND**  
 Shape and Cutting Style **PEAR BRILLIANT**  
 Measurements **11.73 X 7.72 X 4.81 MM**

**GRADING RESULTS**

Carat Weight **2.61 CARATS**  
 Color Grade **FANCY INTENSE ORANGY PINK**  
 Clarity Grade **VS 2**

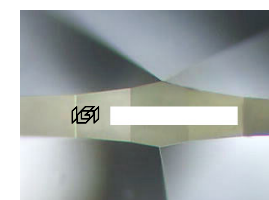
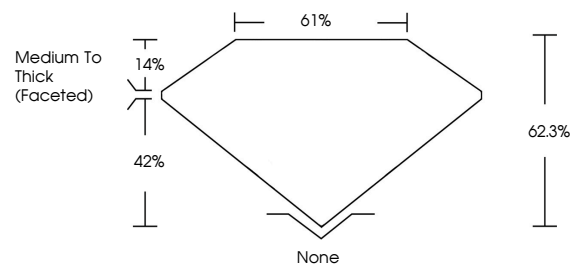
ADDITIONAL GRADING INFORMATION

Polish **EXCELLENT**  
 Symmetry **EXCELLENT**  
 Fluorescence **STRONG**

Inscription(s)

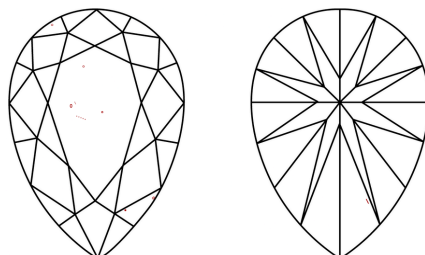
Comments: This Laboratory Grown Diamond was created by Chemical Vapor Deposition (CVD) growth process. Indications of post-growth treatment.

PROPORTIONS



Sample Image Used

CLARITY CHARACTERISTICS



KEY TO SYMBOLS

Red symbols indicate internal characteristics.  
 Green symbols indicate external characteristics.

COLOR

D E F G H I J Faint Very Light Light

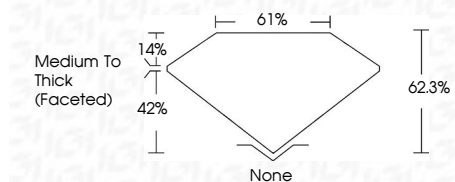
CLARITY

IF	VS <sup>1-2</sup>	VS <sup>1-2</sup>	SI <sup>1-2</sup>	I <sup>1-3</sup>
Internally Flawless	Very Very Slightly Included	Very Slightly Included	Slightly Included	Included

July 8, 2025  
 IGI Report Number  
 Description **LABORATORY GROWN DIAMOND**  
 Shape and Cutting Style **PEAR BRILLIANT**  
 Measurements **11.73 X 7.72 X 4.81 MM**

**GRADING RESULTS**

Carat Weight **2.61 CARATS**  
 Color Grade **FANCY INTENSE ORANGY PINK**  
 Clarity Grade **VS 2**



ADDITIONAL GRADING INFORMATION

Polish **EXCELLENT**  
 Symmetry **EXCELLENT**  
 Fluorescence **STRONG**

Inscription(s)

Comments: This Laboratory Grown Diamond was created by Chemical Vapor Deposition (CVD) growth process. Indications of post-growth treatment.



July 8, 2025  
 IGI Report No **PEAR BRILLIANT**

**11.73 X 7.72 X 4.81 MM**

**2.61 CARATS**  
**FANCY INTENSE ORANGY PINK**  
**VS 2**

Carat Weight  
 Color Grade  
 Clarity Grade

**62.3%**  
**61%**

Depth  
 Table  
 Girdle

**Medium To Thick (Faceted)**  
**None**

Culet  
 Polish  
 Symmetry  
 Fluorescence  
 Inscription(s)

**EXCELLENT**  
**EXCELLENT**  
**STRONG**

Comments: This Laboratory Grown Diamond was created by Chemical Vapor Deposition (CVD) growth process. Indications of post-growth treatment.