



ELECTRONIC COPY

Report verification at igi.org

LABORATORY GROWN DIAMOND REPORT

September 30, 2025
 IGI Report Number
 Description **LABORATORY GROWN DIAMOND**
 Shape and Cutting Style **ROUND BRILLIANT**
 Measurements **7.41 - 7.41 X 4.64 MM**

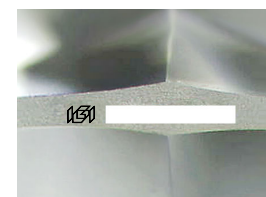
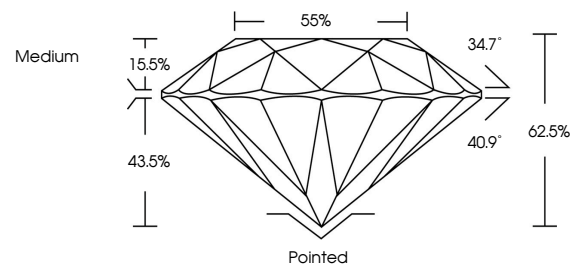
GRADING RESULTS

Carat Weight **1.56 CARAT**
 Color Grade **D**
 Clarity Grade **VVS 2**
 Cut Grade **IDEAL**

ADDITIONAL GRADING INFORMATION

Polish **EXCELLENT**
 Symmetry **EXCELLENT**
 Fluorescence **NONE**
 Inscription(s)

PROPORTIONS



Sample Image Used

COLOR

D E F G H I J Faint Very Light Light

CLARITY

IF WS¹⁻² VS¹⁻² SI¹⁻² I¹⁻³

Internally Flawless Very Very Slightly Included Very Slightly Included Slightly Included Included

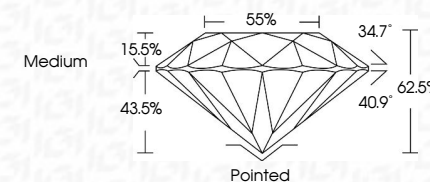
September 30, 2025
 IGI Report Number
 Description **LABORATORY GROWN DIAMOND**
 Shape and Cutting Style **ROUND BRILLIANT**
 Measurements **7.41 - 7.41 X 4.64 MM**

GRADING RESULTS

Carat Weight **1.56 CARAT**
 Color Grade **D**
 Clarity Grade **VVS 2**
 Cut Grade **IDEAL**

ADDITIONAL GRADING INFORMATION

Polish **EXCELLENT**
 Symmetry **EXCELLENT**
 Fluorescence **NONE**
 Inscription(s)



IGI



September 30, 2025	1.56 CARAT	D	Pointed
IGI Report No	7.41 - 7.41 X 4.64 MM	VVS 2	EXCELLENT
ROUND BRILLIANT		IDEAL	EXCELLENT
Carat Weight		62.5%	NONE
Color Grade		Medium	
Clarity Grade			
Cut Grade			
Depth			
Table			
Grille			
Polish			
Symmetry			
Fluorescence			
Inscriptions(s)			