



ELECTRONIC COPY

Report verification at igi.org

LABORATORY GROWN DIAMOND REPORT

August 12, 2024
 IGI Report Number
 Description **LABORATORY GROWN DIAMOND**
 Shape and Cutting Style **PEAR BRILLIANT**
 Measurements **12.51 X 7.84 X 4.90 MM**

GRADING RESULTS

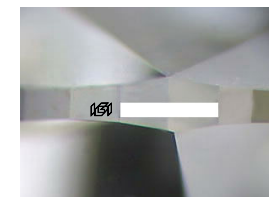
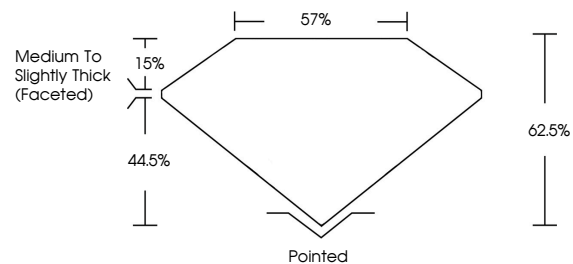
Carat Weight **2.84 CARATS**
 Color Grade **D**
 Clarity Grade **VVS 1**
 Cut Grade **EXCELLENT**

ADDITIONAL GRADING INFORMATION

Polish **EXCELLENT**
 Symmetry **EXCELLENT**
 Fluorescence **NONE**
 Inscription(s)

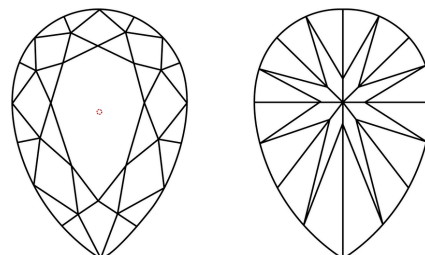
Comments: As Grown - No indication of post-growth treatment.
 This Laboratory Grown Diamond was created by High Pressure High Temperature (HPHT) growth process. Type II

PROPORTIONS



Sample Image Used

CLARITY CHARACTERISTICS



KEY TO SYMBOLS

Red symbols indicate internal characteristics.
 Green symbols indicate external characteristics.

COLOR

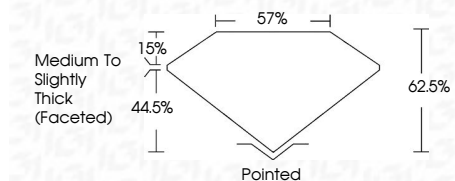
D E F G H I J Faint Very Light Light

CLARITY

IF WS¹⁻² VS¹⁻² SI¹⁻² I¹⁻³

Internally Flawless Very Very Slightly Included Very Slightly Included Slightly Included Included

August 12, 2024
 IGI Report Number
 Description **LABORATORY GROWN DIAMOND**
 Shape and Cutting Style **PEAR BRILLIANT**
 Measurements **12.51 X 7.84 X 4.90 MM**
GRADING RESULTS
 Carat Weight **2.84 CARATS**
 Color Grade **D**
 Clarity Grade **VVS 1**
 Cut Grade **EXCELLENT**



ADDITIONAL GRADING INFORMATION

Polish **EXCELLENT**
 Symmetry **EXCELLENT**
 Fluorescence **NONE**
 Inscription(s)
 Comments: As Grown - No indication of post-growth treatment.
 This Laboratory Grown Diamond was created by High Pressure High Temperature (HPHT) growth process. Type II



| | | | | | | | | | | |
|-----------------|------------------------|-------------|---------------|-------|-------|------------------------------------|-----------|-----------|--------------|-----------------|
| August 12, 2024 | 2.84 CARATS | D | VVS 1 | 62.5% | 57% | Pointed | EXCELLENT | EXCELLENT | NONE | |
| IGI Report No | Carat Weight | Color Grade | Clarity Grade | Depth | Table | Graile | Polish | Symmetry | Fluorescence | Inscriptions(s) |
| PEAR BRILLIANT | 12.51 X 7.84 X 4.90 MM | D | VVS 1 | 62.5% | 57% | Medium To Slightly Thick (Faceted) | EXCELLENT | EXCELLENT | NONE | |

Comments: As Grown - No indication of post-growth treatment.
 This Laboratory Grown Diamond was created by High Pressure High Temperature (HPHT) growth process. Type II