



Report verification at igi.org

ELECTRONIC COPY

DIAMOND REPORT

November 27, 2024
 IGI Report Number
 Description **NATURAL DIAMOND**
 Shape and Cutting Style **PEAR BRILLIANT**
 Measurements **9.47 X 6.29 X 4.16 MM**

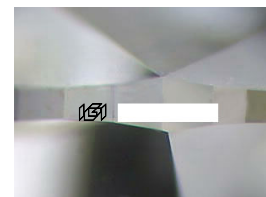
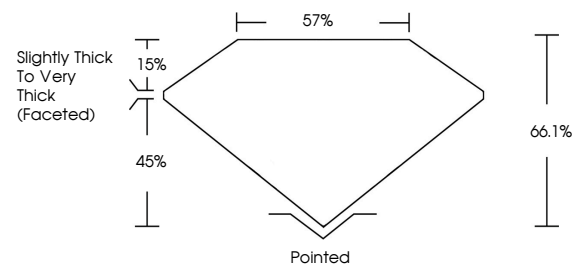
GRADING RESULTS

Carat Weight **1.50 CARAT**
 Color Grade **J**
 Clarity Grade **VS 2**
 Cut Grade **VERY GOOD**

ADDITIONAL GRADING INFORMATION

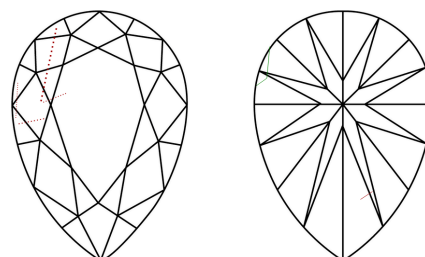
Polish **EXCELLENT**
 Symmetry **VERY GOOD**
 Fluorescence **NONE**
 Inscription(s)

PROPORTIONS



Sample Image Used

CLARITY CHARACTERISTICS



KEY TO SYMBOLS

Red symbols indicate internal characteristics.
 Green symbols indicate external characteristics.

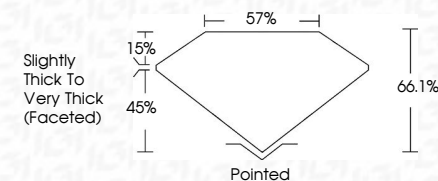
COLOR

D - F	G - J	K - M	N - R	S - Z	FANCY
Colorless	Near Colorless	Slightly Tinted	Very Light Color	Light Color	

CLARITY

IF	VS ¹⁻²	VS ¹⁻²	SI ¹⁻²	I ¹⁻³
Internally Flawless	Very Very Slightly Included	Very Slightly Included	Slightly Included	Included

November 27, 2024
 IGI Report Number
 Description **NATURAL DIAMOND**
 Shape and Cutting Style **PEAR BRILLIANT**
 Measurements **9.47 X 6.29 X 4.16 MM**
GRADING RESULTS
 Carat Weight **1.50 CARAT**
 Color Grade **J**
 Clarity Grade **VS 2**
 Cut Grade **VERY GOOD**



ADDITIONAL GRADING INFORMATION

Polish **EXCELLENT**
 Symmetry **VERY GOOD**
 Fluorescence **NONE**
 Inscription(s)



IGI



November 27, 2024
 IGI Report No **PEAR BRILLIANT**
 9.47 X 6.29 X 4.16 MM
 Carat Weight **1.50 CARAT**
 Color Grade **J**
 Clarity Grade **VS 2**
 Cut Grade **VERY GOOD**
 Depth **66.1%**
 Table **57%**
 Girdle **Slightly Thick to Very Thick (Faceted)**
 Culet **Pointed**
 Polish **EXCELLENT**
 Symmetry **VERY GOOD**
 Fluorescence **NONE**
 Inscription(s)